



**Mekong River Commission**

# **Weekly Wet Season Situation Report in the Lower Mekong River Basin 19 – 25 August 2025**

Prepared by  
The Regional Flood and Drought Management Centre  
26 August 2025

*The MRC is funded by contributions from its Member Countries and Development Partners, including Australia, Belgium, the European Union, Finland, France, Germany, Japan, Luxembourg, the Netherlands, Sweden, Switzerland, the United States and the World Bank.*

**Copyright © Mekong River Commission, 2025**

First published (2020)

Some rights reserved.

This work is the product of the Mekong River Commission Secretariat. While all efforts are made to present accurate information, the Secretariat does not guarantee the accuracy of the data included in this work. The boundaries, colours, denomination, and other information shown on any map in this work do not imply any judgement on the part of the MRC concerning the legal status of any territory or the endorsement or acceptance of such boundaries.

Nothing herein shall constitute or be considered to be a limitation upon or waiver of the privileges and immunities of the MRC, all of which are specifically reserved.

This publication may be reproduced in whole or in part and in any form for educational or non-profit purposes without special permission from the copyright holder, provided acknowledgement of the source is made and notification is sent to the MRC. The MRC would appreciate receiving a copy of any publication that uses this publication as a source. This publication cannot be used for sale or for any other commercial purpose whatsoever without permission in writing from the MRC.

**Title:** Weekly wet season situation report in the Lower Mekong River Basin for 19 – 25 August 2025.

ISSN: 1728-3248

**Keywords:** Monitoring/forecasting/weather/the Mekong/the Tonle Sap Lake

For bibliographic purposes, this volume may be cited as:

Mekong River Commission. (2024). *Weekly wet season situation report in the Lower Mekong River Basin for 19 – 25 August 2025*. Vientiane: MRC Secretariat.

Information on MRC publications and digital products can be found at  
<http://www.mrcmekong.org/publications/>

**All queries on rights and licenses should be addressed to:**

Mekong River Commission

Documentation and Learning Centre

184 Fa Ngoum Road, Unit 18, Ban Sithane Neua, Sikhottabong District, Vientiane 01000, Lao PDR

Telephone: +856-21 263 263 | E-mail: [mrcc@mrcmekong.org](mailto:mrcc@mrcmekong.org) | [www.mrcmekong.org](http://www.mrcmekong.org)

# Content

Content .....	i
List of Figures.....	ii
List of Tables.....	iii
Key Messages .....	iv
1 Introduction .....	1
2 General Weather Patterns .....	2
3. Rainfall and Water Level Monitoring .....	3
3.1. Rainfall monitoring .....	3
3.2. Water level monitoring .....	6
4. Flash Flood in the Lower Mekong Basin .....	10
5. Drought Monitoring in the Lower Mekong Basin .....	13
5.2. Weekly drought monitoring from 19 - 25 August 2025.....	13
6 Weather and Water Level Forecast and Flash Flood information .....	15
6.1 Rainfall forecast .....	15
6.2 Water level forecast .....	17
6.3 Flash Flood Information.....	20
6.4 Drought forecast .....	20
7 Summary and Possible Implications .....	21
7.1. Rainfall and its forecast.....	21
7.2. Water level and its forecast .....	21
7.3. Flash flood and its trends.....	21
7.4. Drought condition and its forecast .....	21
Annex A: Weekly water level monitoring at 22 key stations.....	22
Annex B: Tables for weekly updated water levels and rainfall at the Key Stations .....	25
Annex C: Performance of the weekly flood forecasting.....	29

## List of Figures

Figure 1: Weather conditions over the LMB.....	2
Figure 2: Outlook of wet and dry conditions over the Asian countries by ASMC.....	3
Figure 3: Tropical storm observed on 25 August 2025.....	3
Figure 4: Weekly rainfall distribution over the LMB during 19 – 25 August 2025 .....	5
Figure 5: The key stations along LMB for river flood forecasting .....	7
Figure 6. Water level at the Jinghong hydrological station up to 25 August 2025. ....	8
Figure 7: Seasonal change of inflows and outflows of Tonle Sap Lake. ....	9
Figure 8. The seasonal change in monthly flow volume of Tonle Sap Lake. ....	9
Figure 9. Flash Flood Guidance for the next 1-hr, 3-hr and 6-hr on 25 August .....	13
Figure 10: Weekly standardized precipitation index from 19 - 25 August .....	13
Figure 11: Weekly Index of Soil Water Fraction from 19 - 25 August. ....	14
Figure 12: Weekly Combined Drought Index from 19 - 25 August .....	15
Figure 13: Accumulated rainfall forecast from CHIRPS-GFS (26 – 30 August 2025).....	16
Figure 14. Monthly forecasts of combined drought indicators for August, September and October 2025 .....	20

## List of Tables

Table 1. The monthly change in the flow volume of Tonle Sap Lake. ....	10
Table 2. Detected flash flood in the LMB on 25 August .....	10
Table 3. River Monitoring and Forecasting Bulletin.....	18

# Key Messages

**Key messages for this weekly report are presented below.**

## **Rainfall monitoring and forecast**

- In the period of 19 - 25 August 2025, thunderstorms and heavy to very heavy rain are experienced in the upper and central part of Lao PDR, the northeastern part of Thailand, the 3S Basin.
- Next week, from 26 - 27 August, thunderstorm and heavy rain are likely to occur in some areas in the northern part of Lao PDR and the northern part of Thailand; from 29 - 31 August, thunderstorm and heavy rain are likely to occur in some areas in the northeastern part of Thailand, the central part of Lao PDR, the northern part of Cambodia, and the 3S basin.

## **Water level monitoring and forecast**

- At 22 key monitoring stations along the Mekong mainstream from 19 – 25 August 2025, water levels at all stations along the Mekong mainstream have been in normal conditions, which have not reached alarm or flood levels, and the flow threshold (PMFM 6C) are under normal conditions. It is also the same condition for Tan Chau and Chau Doc monitoring stations, which are significantly influenced by sea tidal fluctuation.
- In the period of 26 – 30 August 2025, the water level at all stations are not expected to reach alarm and flood levels. The water levels at all stations along the Mekong mainstream are expected to rise. However, they are not expected to reach alarm and flood levels. At Tan Chau and Chau Doc stations, the water levels are predicted to be also fluctuated, resulting from the influence of sea tidal patterns.

## **Drought condition and forecast**

- During 19 - 25 August, the LMB were facing normal to wet conditions.
- The next three-month from August to October 2025, the total amount of rainfall in most areas of the LMB will be higher than the LTA by around 5 - 25 mm, except for some areas in the lowland areas of Cambodia, and the Mekong Delta. Overall, in the next 3 months, rainfall will be mainly concentrated in the central part of the LMB and higher than the LTA from 10 – 25 mm.
- The forecast indicates that no drought conditions are expected in over the LMB from August to October 2025 using the Combined Drought Indicator (CDI).

# 1 Introduction

This Weekly Wet Season Situation Report presents a preliminary analysis of the weekly hydrological situation in the Lower Mekong River Basin (LMB) for **19 – 25 August 2025**. The trend and outlook for water levels are also presented.

This analysis is based on the daily hydro-meteorological data provided by the Mekong River Commission (MRC) Member Countries – Cambodia, Lao PDR, Thailand, and Viet Nam – and on satellite data. The water level indicated in this report refers to an above zero gauge of each station.

The report covers the following topics that are updated weekly:

- General weather patterns, including rainfall patterns over the LMB.
- Water levels in the LMB, including in the Tonle Sap Lake.
- Flash flood and drought situation in the LMB.
- Weather, water level and flash flood forecast, and
- Possible implications.

Mekong River water levels are updated daily and can be accessed from:

<http://ffw.mrcmekong.org/bulletin.php>.

Drought monitoring and forecasting information is available at:

<http://droughtforecast.mrcmekong.org>

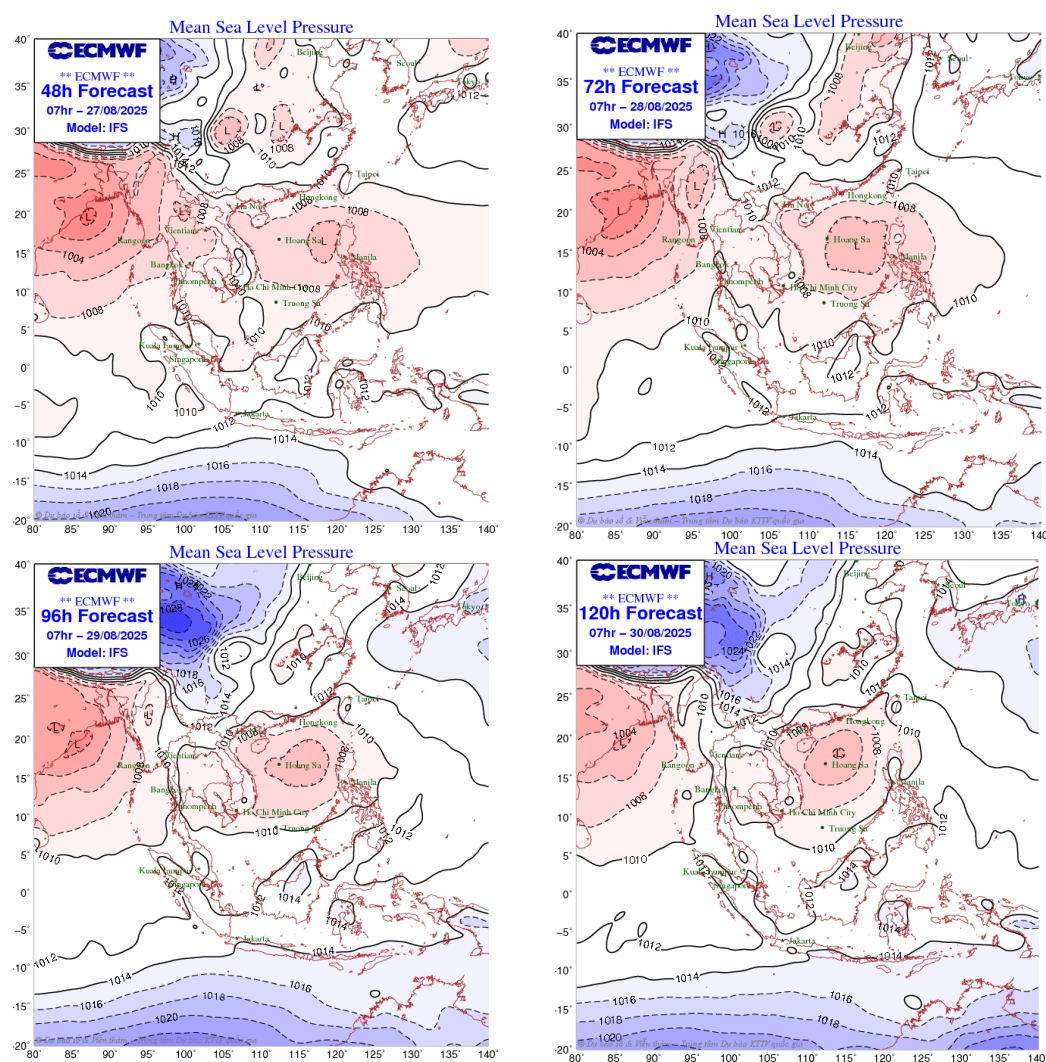
Flash flood information is accessible at: <http://ffp.mrcmekong.org:8000/bulletin/>



## 2 General Weather Patterns

During last week, the Tropical Storm (KAJIKI) made landfall in the central part of Viet Nam on 25 August and moved into Central Lao PDR then weakened into a Tropical Depression (TD). On 26 August, the TD will continue to move in a West-Northwest direction to the upper part of Lao PDR, gradually weakening into a Low-Pressure Area and dissipating. Because from the TD, from 25 – 26 August, the central part of Lao PDR is experienced heavy to very heavy rainfall. And from 26 - 27 August, thunderstorm and heavy rain are be likely to occur in some areas in the northern part of Lao PDR and the northern part of Thailand; from 29 - 31 August, thunderstorm and heavy rain are likely to occur in some areas in the northeastern part of Thailand, the central part of Lao PDR, the northern part of Cambodia, and the 3S basin

**Figure 1** presents mean sea level pressure over the region



**Figure 1: Weather conditions over the LMB**

According to the ASEAN Specialised Meteorological Centre (ASMC, <http://asmc.asean.org/home/>), the sub seasonal weather outlook (18 – 24 August 2025) indicates that the Lower Mekong Basin (LMB) are not expected to experience drier or wetter conditions. Moreover, it will not be expected to either warmer or cooler conditions as well. **Figure 2** shows the outlook

of weather condition from 04 to 17 August 2025 in Southeast Asia based on results from the NCEP model (National Centres for Environmental Prediction).

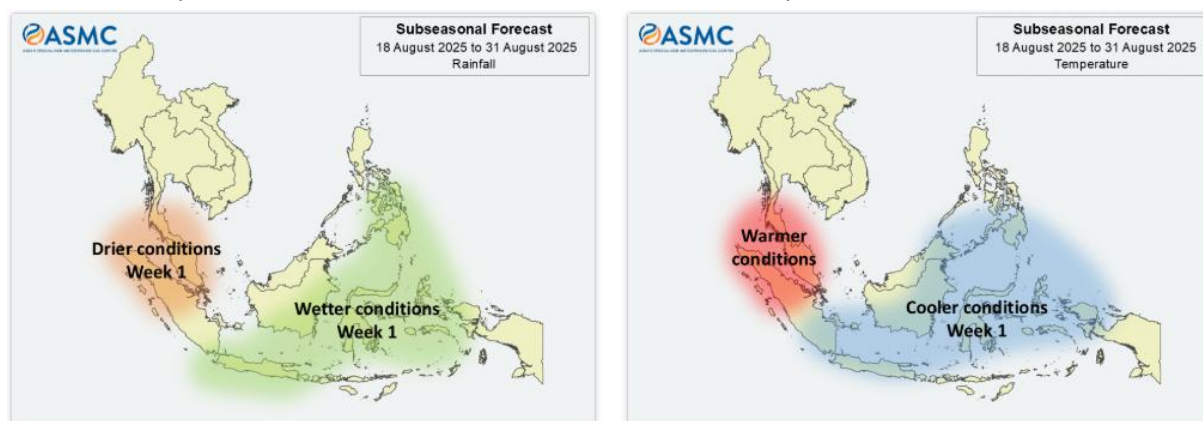


Figure 2: Outlook of wet and dry conditions over the Asian countries by ASMC.

Based on the tropical storm risk (TS) ([https://www.ima.go.jp/bosai/weather\\_map/#lang=en](https://www.ima.go.jp/bosai/weather_map/#lang=en)), there is on Tropical Storm (TS), namely KAJIKI at NW pacific system as of **25 August 2025** (Figure 3). The center of Tropical Storm (TS) at about 18.4 degrees North latitude; 107.2 degrees East longitude on the East Sea, with the maximum sustained winds of 150-166 km/h and moving the West Northwest at a speed of about 20 km/h.

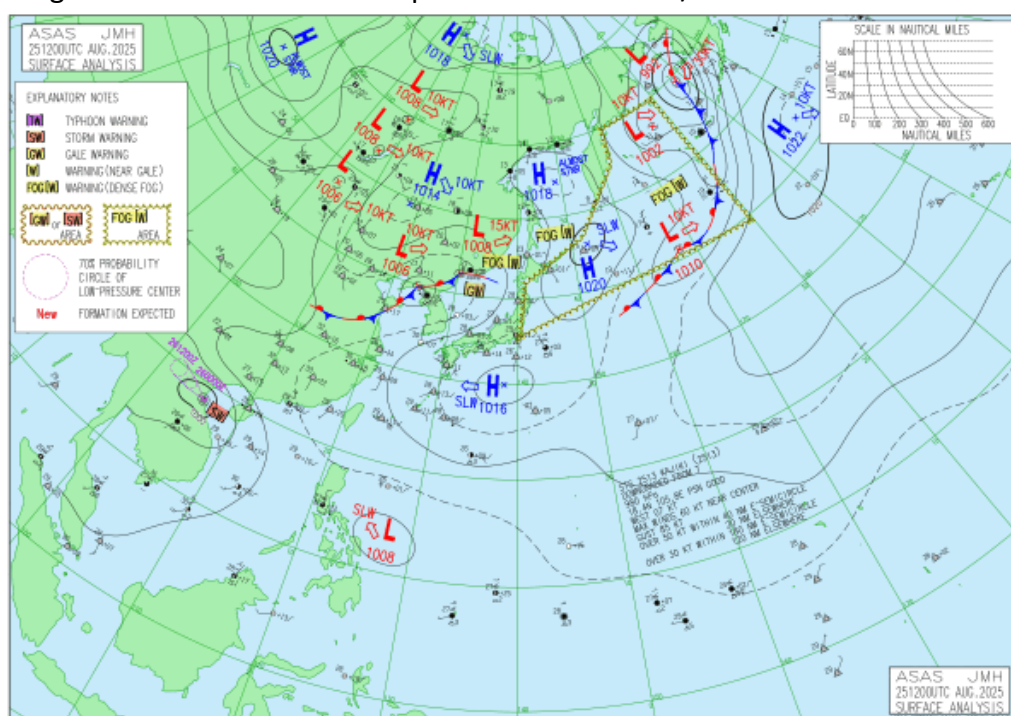


Figure 3: Tropical storm observed on 25 August 2025

### 3. Rainfall and Water Level Monitoring

#### 3.1. Rainfall monitoring

The weekly accumulated rainfall based on the observed data provided by the MRC Member Countries – Cambodia, Lao PDR, Thailand, and Viet Nam – from 19 - 25 August 2025 (Figure

**4).** Thunderstorms and heavy to very heavy rain are experience in the upper and central part of Lao PDR, the northeastern part of Thailand, the 3S Basin.

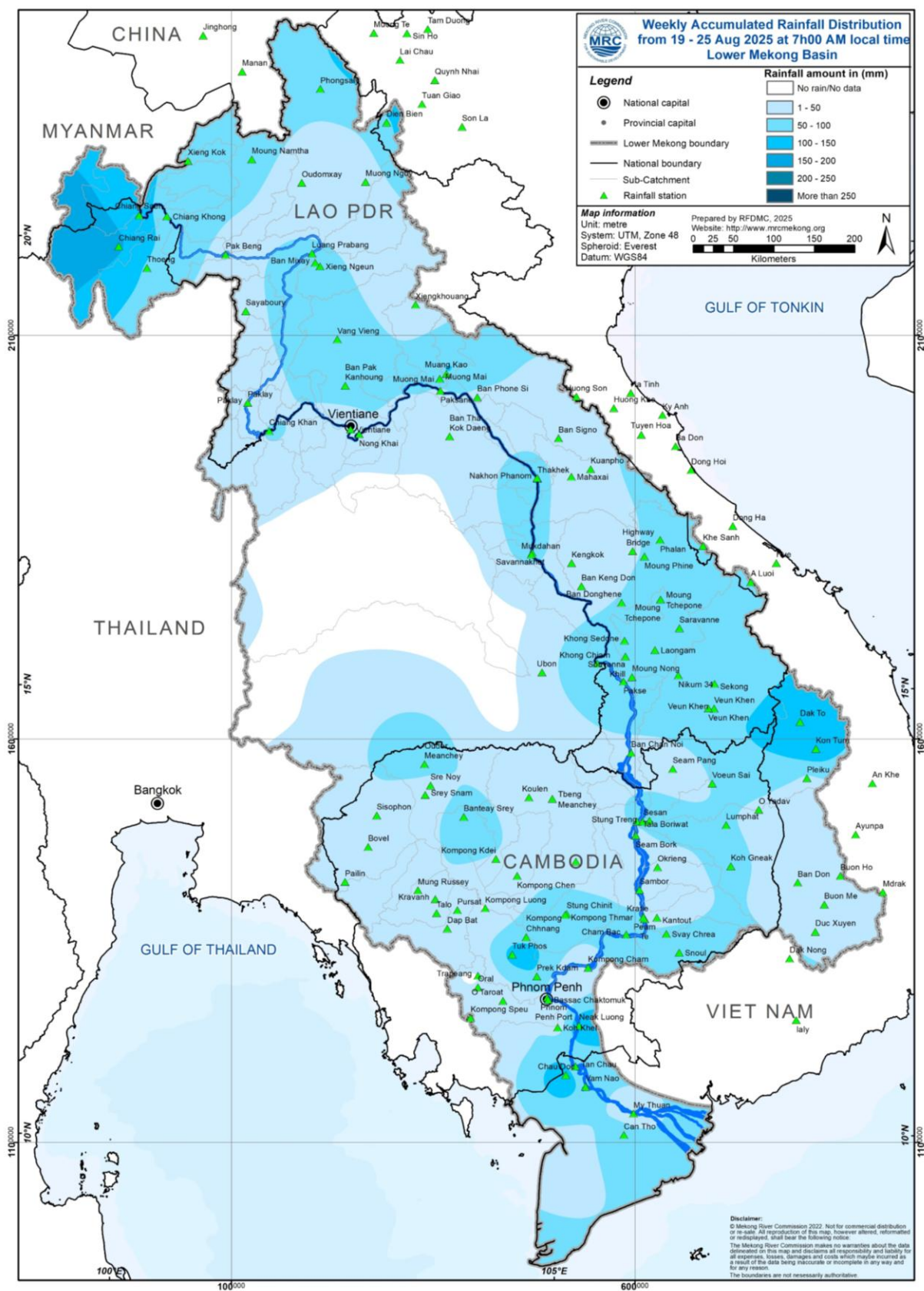


Figure 4: Weekly rainfall distribution over the LMB during 19 – 25 August 2025



### 3.2. Water level monitoring

The hydrological regimes of the Mekong mainstream are illustrated by recorded water levels and flows at key mainstream stations: at Chiang Saen to capture mainstream flows entering from the Upper Mekong Basin (UMB); at Vientiane to present flows generated by climate conditions in the upper part of the LMB; at Pakse to investigate flows influenced by inflows from the larger Mekong tributaries; at Kratie in Cambodia to capture overall flows of the Mekong Basin; and at Viet Nam's Tan Chau and Chau Doc to monitor flows to the Delta.

The key stations along the LMB and their respective model application for River Flood Forecasting during the wet season from June to October and River Monitoring during the dry season from November to May are presented in **Figure 5**. The hydrograph for each key station is available from the MRC's River Flood Forecasting: <http://ffw.mrcmekong.org/overview.php>.

During 19 – 25 August 2025, the observed water level (WL) at Jinghong hydrological station<sup>1</sup>, was almost constant and ranges between 536.97 and 537.21 m, which are corresponding to the outflow between 2,130.00 m<sup>3</sup>/s to 2,340.00 m<sup>3</sup>/s (recorded on 7:00 am), respectively (**Figure 6**). The water level in Chiang Saen Station also indicated a slight fluctuation ranging from 5.06 m to 5.62 m. At the same period, the water level in Luang Prabang Station also increased with an approximate value of 1.14 m from 12.54 m to 13.68 m as compared to the previous week. In addition, at Chiang Khan, the water level has decreased from 11.13 m to 10.75 m.

The water levels at Vientiane, Nongkhai, Paksane, Nakhon Phanom, Thakhek, Mukdahan, Savannakhet, Khong Chiam and Pakse stations have decreased from 9.39 m to 8.44 m, 8.96 m to 7.96 m, 9.70 m to 9.58 m, 8.40 m to 8.08 m, 9.57 m to 9.25 m, 8.09 m to 7.77 m, 6.50 m to 6.22 m, 9.09 m to 8.83 m, and 7.38 m to 7.04 m, respectively.

In addition, the water levels at Stung Treng, Kratie, Kompong Cham, Phnom Penh (Bassac), Phnom Penh Port, Koh Khel, Neak Luong and Prek Kdam also have decreased 6.91 m to 6.59 m, 16.19 m to 15.56 m, 10.12 m to 9.76 m, 6.80 m to 6.70 m, 5.61 m to 5.36 m, 6.04 m to 5.89 m, 4.74 m to 6.64 m, and 5.88 m to 5.85 m, respectively.

Similar to the previous week, the water levels from 19 to 25 August 2025 at Viet Nam's Tan Chau and Chau Doc fluctuated between their LTA values due to daily tidal effects from the sea. At the Tan Chau station, the water levels varied between 2.09 m and 2.08 m, while at the Chau Doc station, they ranged from 1.85 m and 1.76 m.

---

<sup>1</sup> Near-real time data of hydro-meteorological monitoring at the Jinghong hydrological station is available at <https://portal.mrcmekong.org/monitoring/river-monitoring-telemetry>.

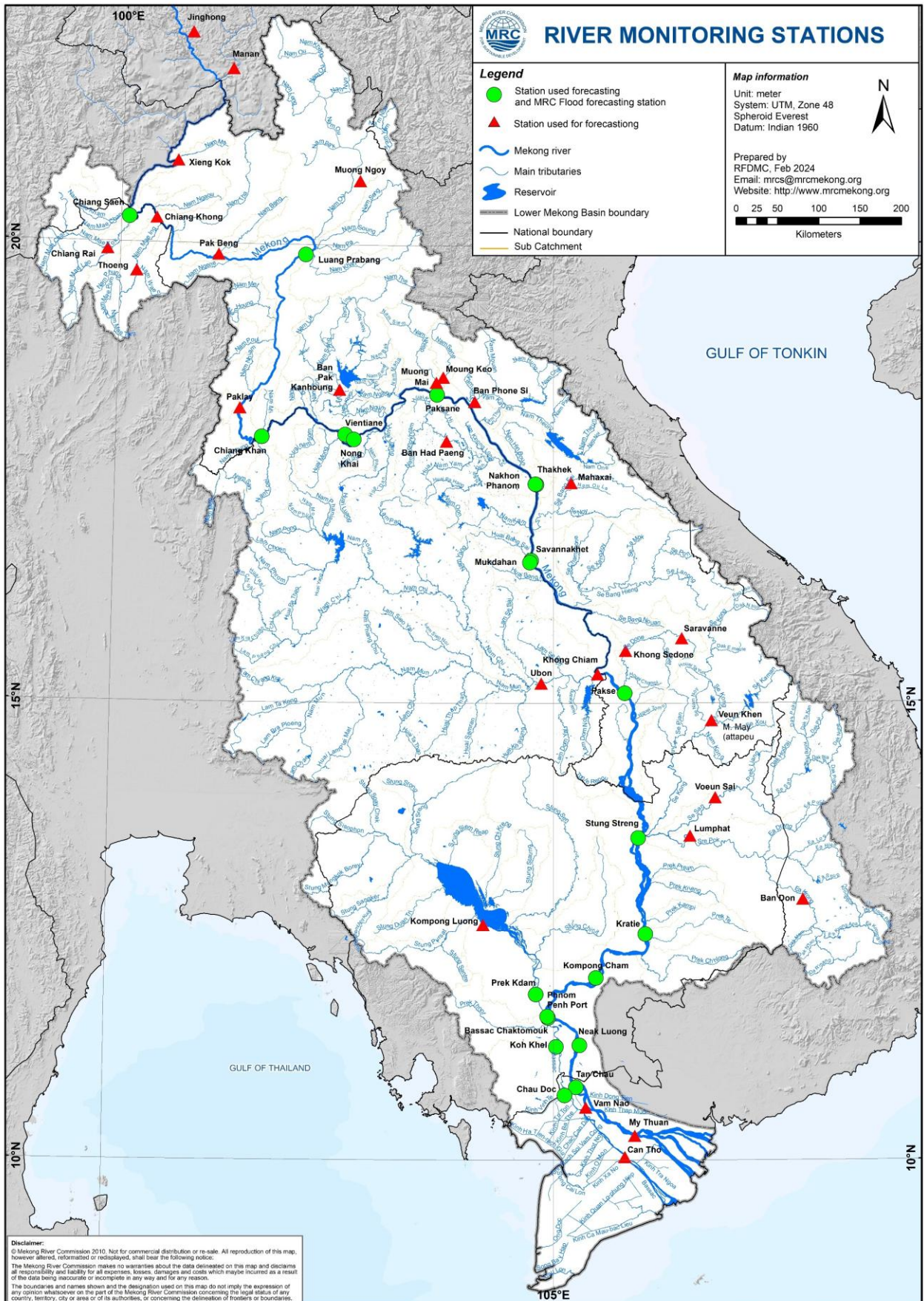
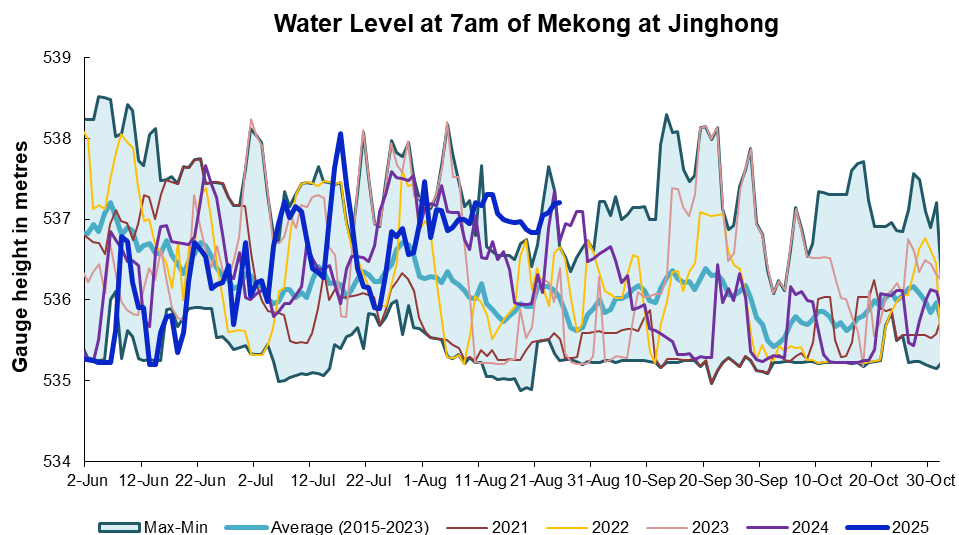


Figure 5: The key stations along LMB for river flood forecasting

The water levels in key monitoring stations on 25 August 2025 are in normal conditions, which have not reached alarm or flood levels. Moreover, all stations with available PMFM thresholds are in normal conditions. The graphics of water level monitoring in all key stations are presented in **Annex A** and the weekly water levels and rainfall at each key station are summarised in **Annex B**.



**Figure 6. Water level at the Jinghong hydrological station up to 25 August 2025.**

At the end of the wet season, when water levels along the Mekong River subside, the outflow of the Tonle Sap Lake (TSL) returns to the Mekong River and then to the Delta. This phenomenon normally takes place between September and October. Based on flow observation at Prek Kdam monitoring station, the inflow (reverse flow) of the Tonle Sap Lake took place since 29 May 2025.

The inflow flow is calculated based on a formula of rating-curves using by difference of water levels at Kompong Luong and Phnom Penh Port stations for slop and Prek Kdam as cross-section of the Lake. The formula of flow is as follows:

$$Flow = WL_{Prek\ Kdam}^{1.2} \times \sqrt{|WL_{Phnom\ Penh\ Port} - WL_{Kampong\ Luong}|}$$

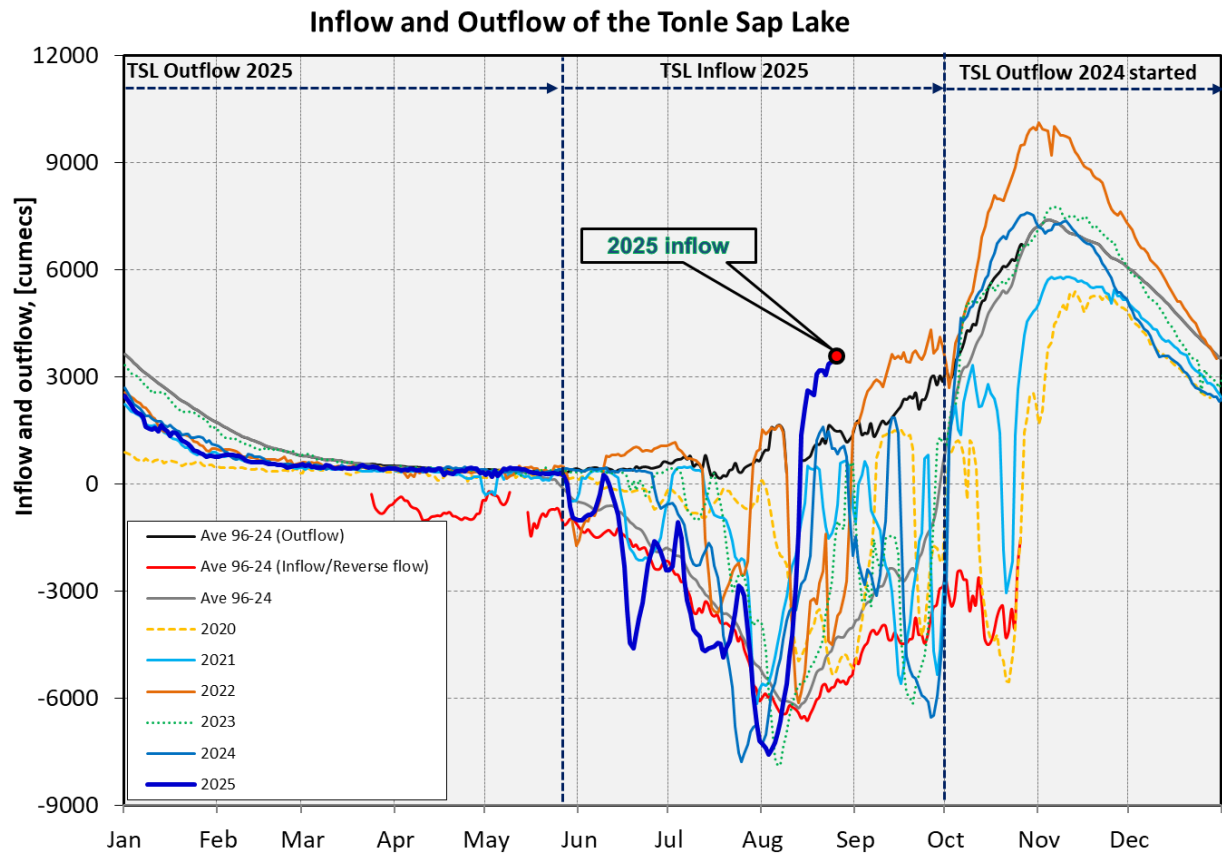
Where, WL is water level in m (msl).

The seasonal changes of the inflow/reverse flow and the outflow of the TSL at Prek Kdam in comparison with the flows of 2020, 2021 and 2022, 2023 and their LTA level (1997-2024) are illustrated in **Figure 7**. Up to 25 August 2025, it was observed that the inflow to Tonle Sap Lake is relatively higher than its LTA due to significant high inflows from upstream (**Figure 7**).

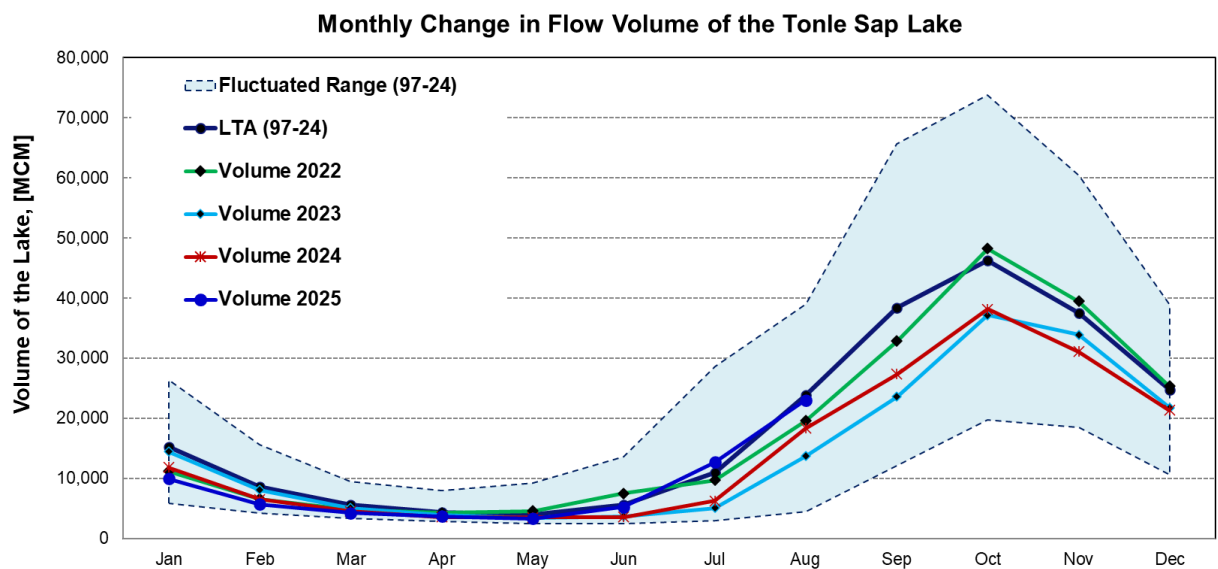
The seasonal changes in monthly flow volumes up to 25 August 2025 for the TSL compared with that in 2020, 2021, 2022, 2023, 2024 and their LTAs, and the fluctuation levels (1997–2024) are presented in **Table 8**. The mean monthly water volume of the Tonle Sap Lake in July



2025 is higher than its LTA (about 115.18 %) and all recent years except for 2019 during the same period (**Figure 8 and Table 1**).



**Figure 7: Seasonal change of inflows and outflows of Tonle Sap Lake.**



**Figure 8. The seasonal change in monthly flow volume of Tonle Sap Lake.**



**Table 1. The monthly change in the flow volume of Tonle Sap Lake.**

Month	LTA (97-24) [MCM]	Max Volume [MCM]	Min Volume [MCM]	Volume 2019 [MCM]	Volume 2020 [MCM]	Volume 2021 [MCM]	Volume 2022 [MCM]	Volume 2023 [MCM]	Volume 2024 [MCM]	Volume 2025 [MCM]	Volume in 2025 [%], compared with its LTA
Jan	15197.93	26357.53	5906.80	13080.39	10285.31	5906.80	9923.80	11214.32	14422.11	10341.91	68.05
Feb	8644.19	15596.22	4198.60	7302.32	6019.30	4264.19	5832.97	6558.79	8069.29	5690.52	65.83
Mar	5564.35	9438.24	3347.07	4852.74	4354.62	3553.99	4264.88	4736.52	5080.64	4256.33	76.49
Apr	4300.28	8009.14	2866.91	4282.78	3667.47	2992.61	3556.68	4288.31	3884.16	3697.92	85.99
May	4009.61	9176.93	2417.81	4356.44	3266.43	2594.92	3240.78	4556.83	3438.66	3322.45	82.86
Jun	5624.02	13635.01	2468.70	8465.20	3517.06	2641.88	3798.29	7489.04	3689.97	5278.20	93.85
Jul	11012.31	28599.56	2925.86	14964.58	4001.99	2925.86	5346.73	9703.79	5062.21	12706.40	115.38
Aug	23865.05	39015.12	4433.46	23407.37	7622.71	5941.07	10547.80	19554.70	13694.57	23010.40	96.42
Sep	38377.57	65632.35	12105.31	39654.01	24194.19	12105.31	16382.34	32860.34	23550.60		
Oct	46261.30	73757.23	19705.50	41847.54	30358.38	20799.13	27318.21	48199.12	37141.40		
Nov	37500.63	60367.33	18534.61	33663.58	19112.65	27546.80	28982.93	39452.53	33929.52		
Dec	24795.31	38888.95	10563.49	23079.82	10577.29	18251.65	20170.76	25346.65	21757.70		
	Critical situation: lower than long-term minimum values (LTMIN)										
	Normal condition: within the range of long-term average (LTA) and max (LTMAX) values										
	Low volume situation: lower than long-term average (LTA)										
Unit: Million Cubic Meter (1 MCM= 0.001 Km <sup>3</sup> )											

**Remarks:** the volume of Tonle Sap Lake in 2025 is updated until 25 August 2025.

## 4. Flash Flood in the Lower Mekong Basin

During the weekly monitoring period from 19 - 25 August, the LMB received light to heavy rain and thunderstorms in some areas.

According to the Southeast Asian Flash Flood Guidance System (SEAFFGS) and analysis, flash flood guidance was detected at low to high level in the next 1, 3 and 6 hours in some areas in Cambodia and Lao PDR during the reporting period as shown in [Figure 14](#) & [Table 2](#).

**Table 2. Detected flash flood in the LMB on 25 August**

FLASH FLOOD GUIDANCE IN THE LOWER MEKONG BASIN								
In the next 1hrs			In the next 3hrs			In the next 6hrs		
Provinces	Districts	Level	Provinces	Districts	Level	Provinces	Districts	Level
Kampot	Chum Kiri	Moderate	Mondul Kiri	Pechr Chenda	Moderate	Mondul Kiri	Pechr Chenda	Moderate
Mondul Kiri	Kaoh Nheak	Moderate	Ratana Kiri	Andoung Meas	High	Ratana Kiri	Andoung Meas	High
Mondul Kiri	Pechr Chenda	Moderate	Ratana Kiri	Ban Lung	Moderate	Ratana Kiri	Ban Lung	Moderate
Ratana Kiri	Andoung Meas	High	Ratana Kiri	Koun Mom	Moderate	Ratana Kiri	Koun Mom	High
Ratana Kiri	Ban Lung	Moderate	Ratana Kiri	Ou Chum	Moderate	Ratana Kiri	Ou Chum	High
Ratana Kiri	Bar Kaev	Moderate	Ratana Kiri	Ta Veang	High	Ratana Kiri	Ta Veang	High
Ratana Kiri	Koun Mom	High	Ratana Kiri	Veun Sai	High	Ratana Kiri	Veun Sai	High

FLASH FLOOD GUIDANCE IN THE LOWER MEKONG BASIN								
In the next 1hrs			In the next 3hrs			In the next 6hrs		
Provinces	Districts	Level	Provinces	Districts	Level	Provinces	Districts	Level
Ratana Kiri	Ou Chum	High	Stung Treng	Sesan	High	Stung Treng	Sesan	High
Ratana Kiri	Ta Veaeng	High	Stung Treng	Siem Pang	High	Stung Treng	Siem Pang	High
Ratana Kiri	Veun Sai	High						
Stung Treng	Sesan	High						
Stung Treng	Siem Pang	High						

FLASH FLOOD RISK IN THE LOWER MEKONG BASIN					
In the next 12hrs			In the next 24hrs		
Provinces	Districts	Level	Provinces	Districts	Level
Kratie	Sambour	Moderate	Kratie	Sambour	Moderate
Mondul Kiri	Kaev Seima	Moderate	Mondul Kiri	Kaev Seima	Moderate
Mondul Kiri	Kaoh Nheaek	Moderate	Mondul Kiri	Kaoh Nheaek	Moderate
Ratana Kiri	Koun Mom	Moderate	Mondul Kiri	Ou Reang	Moderate
Ratana Kiri	Lumphat	Moderate	Ratana Kiri	Andoung Meas	Moderate
Ratana Kiri	Ou Ya Dav	Moderate	Ratana Kiri	Koun Mom	High
Ratana Kiri	Ta Veaeng	High	Ratana Kiri	Lumphat	Moderate
Ratana Kiri	Veun Sai	High	Ratana Kiri	Ou Ya Dav	Moderate
Stung Treng	Sesan	Moderate	Ratana Kiri	Ta Veaeng	High
Stung Treng	Siem Pang	Moderate	Ratana Kiri	Veun Sai	High
			Stung Treng	Sesan	Moderate
			Stung Treng	Siem Pang	Moderate

FLASH FLOOD GUIDANCE IN THE LOWER MEKONG BASIN								
In the next 1hrs			In the next 3hrs			In the next 6hrs		
Provinces	Districts	Level	Provinces	Districts	Level	Provinces	Districts	Level
Champasak	Pathoomph	Moderate	Khammuane	Xaybouath	High	Khammuane	Xaybouath	High
Khammuane	Xaybouath	High						

FLASH FLOOD RISK IN THE LOWER MEKONG BASIN					
In the next 12hrs			In the next 24hrs		
Provinces	Districts	Level	Provinces	Districts	Level
Attapeu	Phouvong	Moderate	Attapeu	Phouvong	Moderate
Attapeu	Sanxay	High	Attapeu	Sanxay	High
Bolikhamxay	Khamkheut	High	Attapeu	Xaysetha	Moderate

FLASH FLOOD RISK IN THE LOWER MEKONG BASIN					
In the next 12hrs			In the next 24hrs		
Provinces	Districts	Level	Provinces	Districts	Level
Bolikhambxay	Viengthong	High	Bolikhambxay	Khamkheut	High
Champasak	Paksong	Moderate	Bolikhambxay	Pakkading	Moderate
Khammuane	Bualapha	Moderate	Bolikhambxay	Thaphabat	Moderate
Khammuane	Hinboon	Moderate	Bolikhambxay	Viengthong	High
Khammuane	Nakai	High	Champasak	Bachiangc	Moderate
Saravane	Samuoi	Moderate	Champasak	Paksong	High
Saravane	Ta oi	Moderate	Champasak	Pathoomph	Moderate
Saravane	Toomlarn	Moderate	Khammuane	Bualapha	Moderate
Saravane	Vapy	Moderate	Khammuane	Hinboon	High
Savannakhet	Khanthabo	Moderate	Khammuane	Nakai	High
Savannakhet	Nong	Moderate	Khammuane	Nhommalat	Moderate
Savannakhet	Phine	Moderate	Saravane	Lakhoneph	Moderate
Savannakhet	Vilabuly	Moderate	Saravane	Samuoi	Moderate
			Saravane	Ta oi	High
			Saravane	Toomlarn	Moderate
			Saravane	Vapy	High
			Savannakhet	Champhone	Moderate
			Savannakhet	Khanthabo	High
			Savannakhet	Nong	High
			Savannakhet	Phine	Moderate
			Savannakhet	Sepone	Moderate
			Savannakhet	Songkhone	Moderate
			Savannakhet	Thapangth	Moderate
			Savannakhet	Vilabuly	Moderate
			Savannakhet	Xonbuly	Moderate
			Sekong	Dakcheung	Moderate
			Xaysomboun	Thathom	Moderate
			Xaysomboun	Xaysombou	Moderate
			Xiengkhuang	Khoune	Moderate
			Xiengkhuang	Morkmay	Moderate

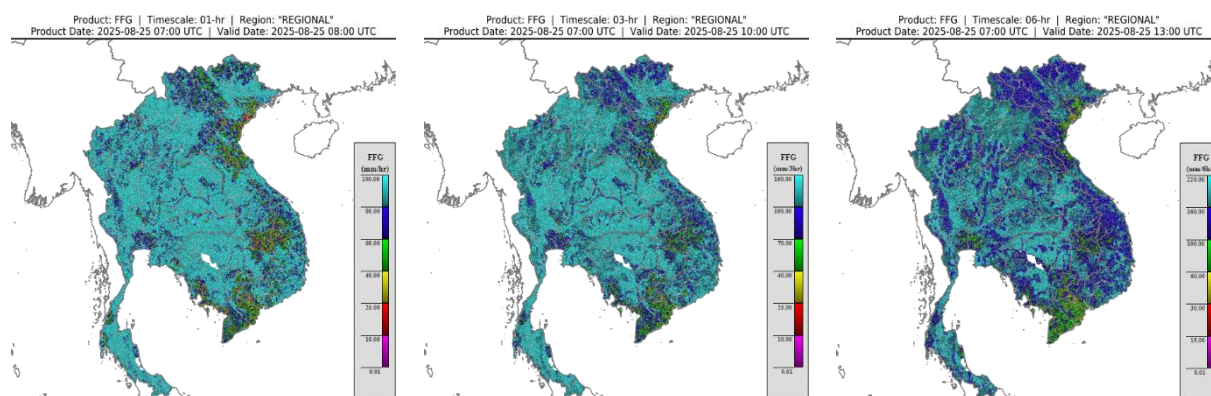


Figure 9. Flash Flood Guidance for the next 1-hr, 3-hr and 6-hr on 25 August

## 5. Drought Monitoring in the Lower Mekong Basin

### 5.2. Weekly drought monitoring from 19 - 25 August 2025

Drought monitoring data for 2025 are available from Monday to Sunday every week; thus, the reporting period is normally delayed by one day compared to Flood and Flash Flood reports. We adopt the Index of Soil Water Fraction (ISWF) data obtained from FFGS to represent soil moisture of agricultural indicator for both dry and wet seasons.

- **Weekly Standardised Precipitation Index (SPI1)**

Meteorological indicator shows that from 19 - 25 August, as shown in Figure 9, the LMB were facing normal to wet conditions.

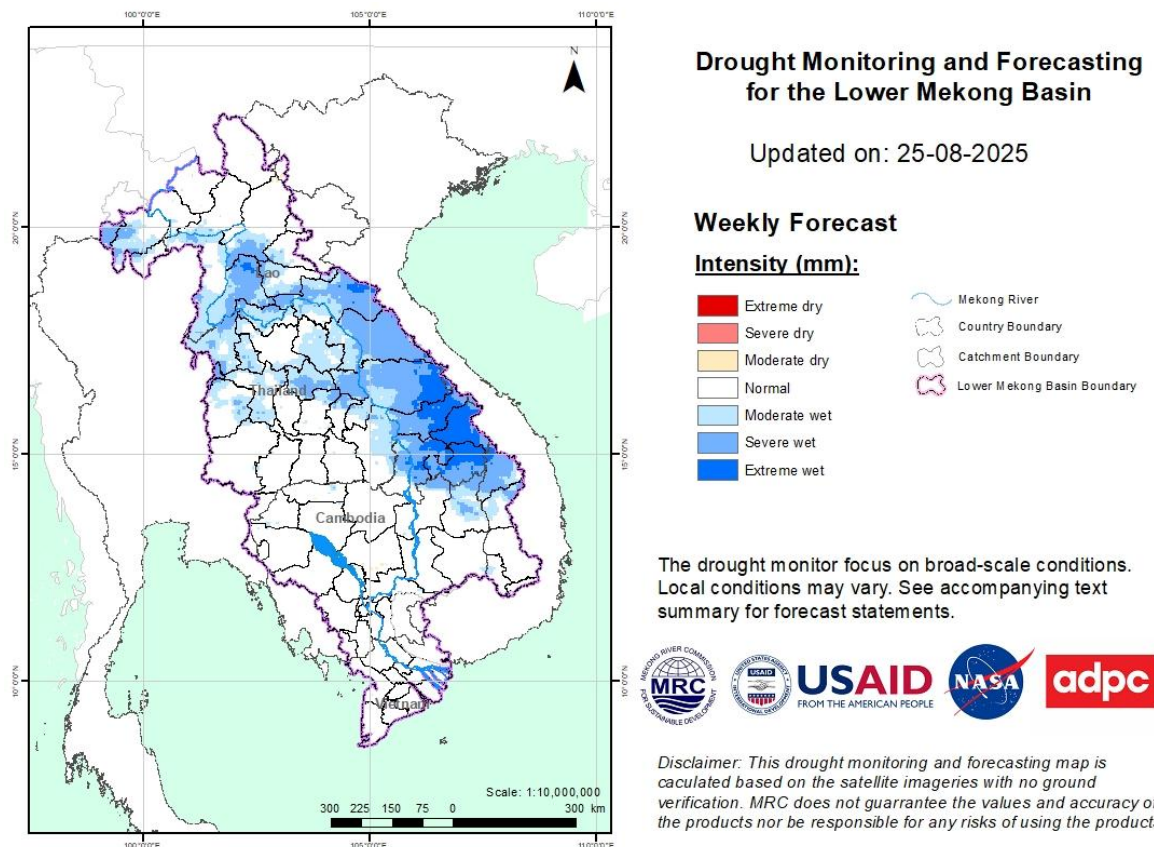
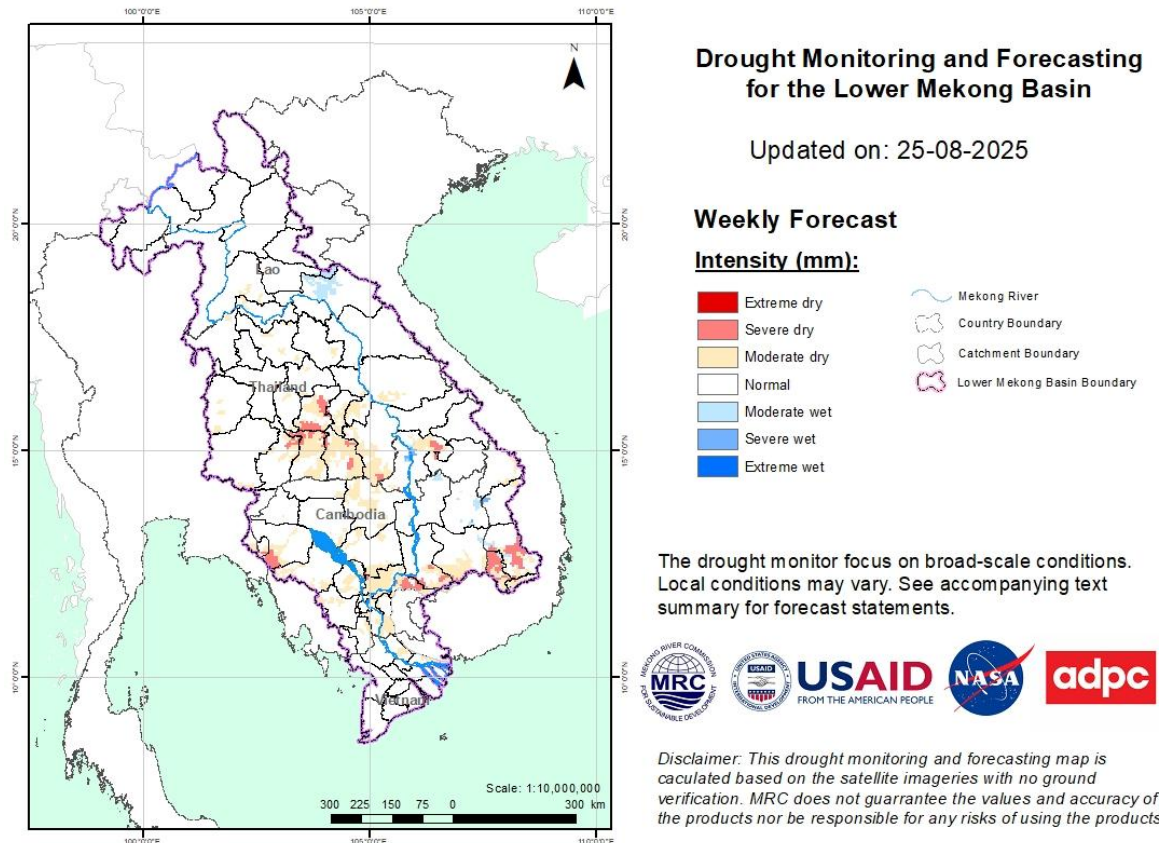


Figure 10: Weekly standardized precipitation index from 19 - 25 August

- **Weekly Index of Soil Water Fraction (ISWF)**

No drought over the LMB by the Index of Soil Water Fraction, as displayed in **Figure 10**, during the monitoring week from 19 - 25 August. The LMB was facing normal to wet conditions, except some areas in the northeastern part of Thailand, lower part of Cambodia, and the 3S basin



**Figure 11: Weekly Index of Soil Water Fraction from 19 - 25 August.**

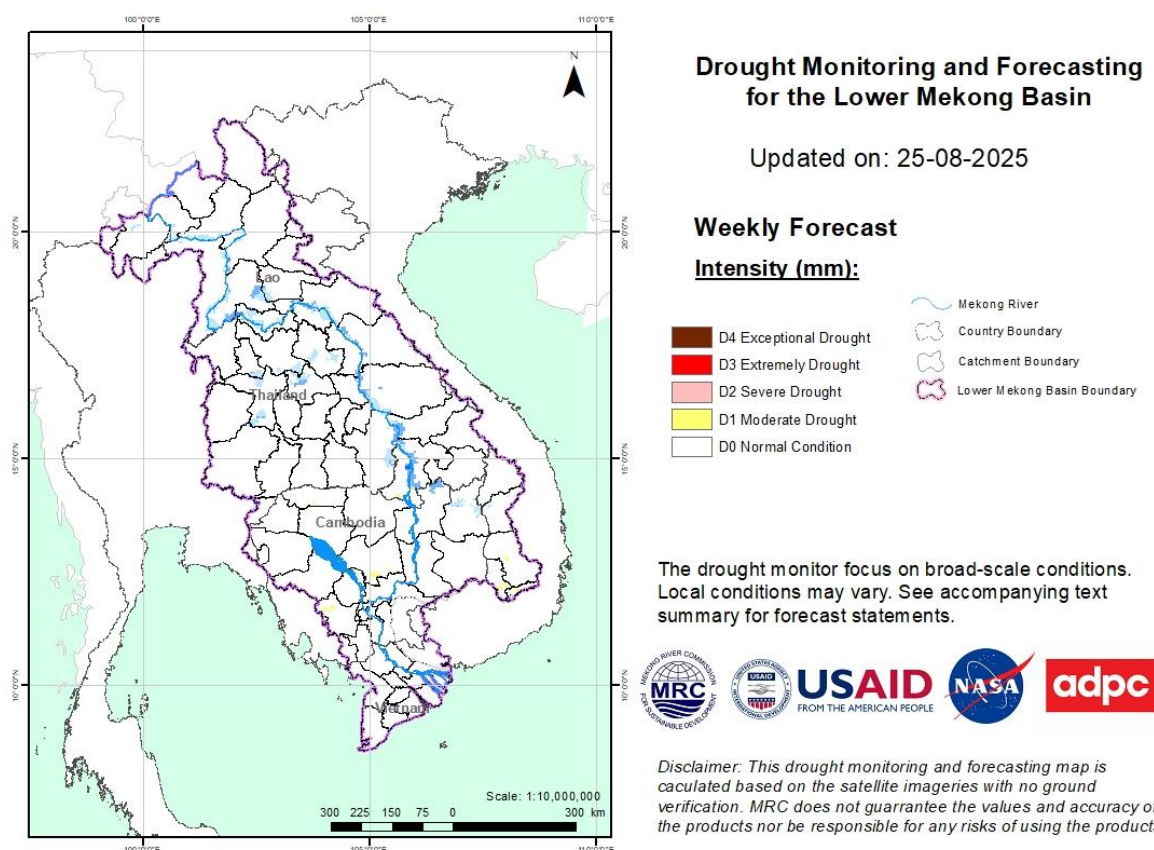
- **Weekly Combined Drought Index (CDI)**

The combined drought indicator, **Figure 11**, that some areas experienced moderate drought. The impacted areas are listed below:

Number	Country	Province	Moderate	Severe	Extreme	Exceptional	Number	Country	Province	Moderate	Severe	Extreme	Exceptional
1	Cambodia	Banteay Meanchey					26	Thailand	Amnat Charoen				
2	Cambodia	Kampong Cham					27	Thailand	Buri Ram				
3	Cambodia	Otdar Meanchey					28	Thailand	Si Sa Ket				
4	Cambodia	Preah Vihear					29	Thailand	Surin				
5	Cambodia	Siem Reap					30	Thailand	Udon Thani				
6	Cambodia	Tboung Khmum					31	Thailand	Yasothon				
7	Lao PDR	Attapu					32						
8	Lao PDR	Bolikhamxai					33						
9	Lao PDR	Champasak					34	Other provinces of the Mekong Delta of Viet Nam have no data					
10	Lao PDR	Khammouan					35		Moderate		Severe		
11	Lao PDR	Louangnamtha					36		Extreme		Exceptional		
12	Lao PDR	Louangphabang					37						
13	Lao PDR	Oudomxai					38						
14	Lao PDR	Phongsali					39						

*Note:* S: short-term drought, less than 1 months; L: long-term drought, more than 1 month





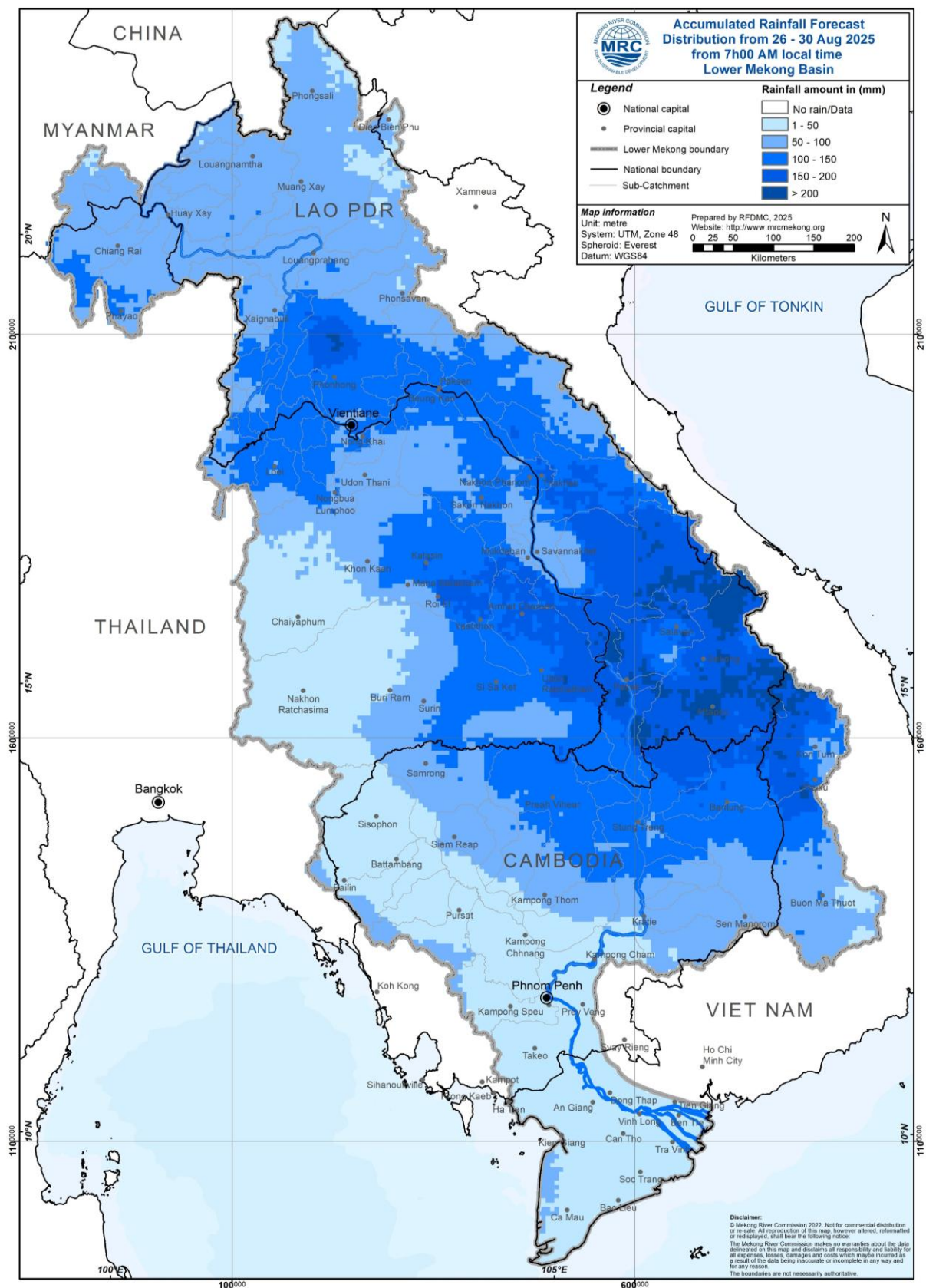
**Figure 12: Weekly Combined Drought Index from 19 - 25 August**

More information on Drought Forecasting and Early Warning (DFEW) as well as the explanation is available here: <http://droughtforecast.mrcmekong.org/templates/view/our-product>. DFEW provides not only weekly monitoring and forecasting information but also a three-month forecast of drought indicators with seasonal outlook which are updated every month based on international weather forecast models. Details on drought forecast are described in section 6.4 of this report.

## 6 Weather and Water Level Forecast and Flash Flood information

### 6.1 Rainfall forecast

During 26 – 30 August 2025, the accumulated rainfall over the entire Lower Mekong Basin is distributed with light to heavy rain based on CHIRPS-GFS (**Figure 12**). Moderate to heavy rainfall is likely to occur in the northern and central part of Lao PDR, the northeastern part of Thailand, and the northern part of Cambodia, and the 3S basin.



**Figure 13: Accumulated rainfall forecast from CHIRPS-GFS (26 – 30 August 2025)**

## 6.2 Water level forecast

During the wet season, from June 1st to October 31st each year, daily riverine flood forecasts are conducted for 22 stations along the Mekong mainstream, with a forecast lead time of five days. This report will describe the forecast water level for a period of 26 – 30 August 2025. The water levels at all stations along the Mekong mainstream are expected to rise. However, they are not expected to reach alarm and flood levels within the next 5 days.

In Chiang Saen monitoring station, the water level is expected to be fluctuated over the forecasting period of 26 – 30 August 2025 with increasing trend. The water level in Luang Prabang stations affected by backwater is likely slightly increasing within a range from 13.68 m to 13.92 m. In addition, at Chiang Khan station, the water level is also expected to rise approximately 1.38 m. At Vientiane and Nongkhai stations, the water levels are also expected to rise approximately 1.49 m and 1.72 m, respectively.

The water levels at Paksane, Nakhon Phanom, Thakhek, Mukdahan, Savannakhet, Khong Chiam and Pakse stations are expected to slightly increase in the next 5 days with approximately value of 1.97 m, 1.66 m, 1.67 m, 1.84 m, 1.82 m, 1.92 m, and 1.94 m, respectively.

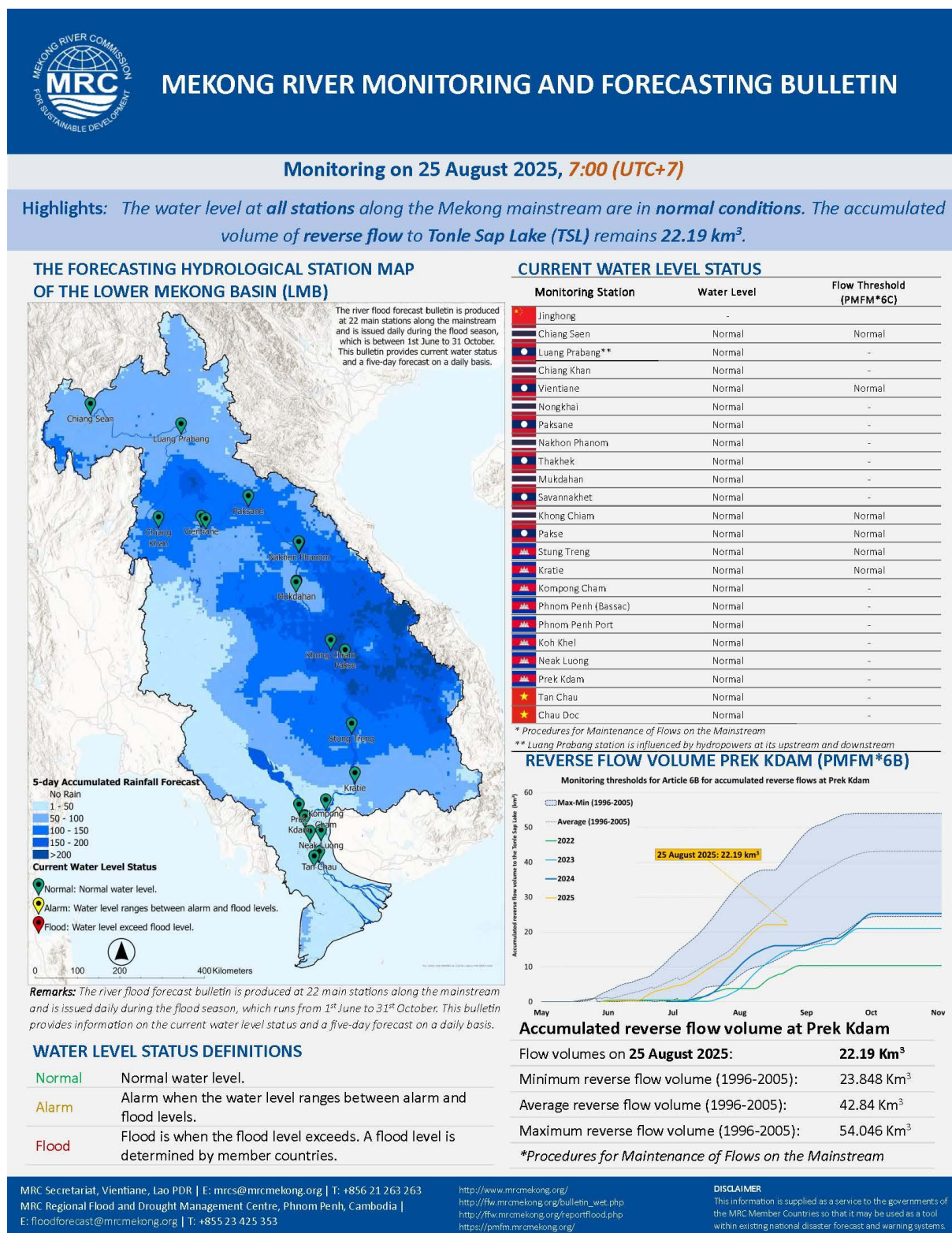
At the floodplain in Cambodia from Stung Treng station downstream, the water levels are expected to increase. At Stung Treng, Kratie, Kompong Cham, Phnom Penh (Bassac), Phnom Penh Port, Koh Khel, Neak Luong, and Prek Kdam, the water levels are expected to increase approximately 1.05 m, 0.90 m, 0.32 m, 0.08 m, 0.08 m, 0.03 m, 0.03 m, and 0.08 m, respectively.

For the Tan Chau station on the Mekong River and Chau Doc station on the Bassac River, water levels will be fluctuating approximately ranging between 2.08 m & 2.43 m and 1.76 m & 2.13 m, respectively, following daily tidal effects from the sea.

The weekly River Monitoring Bulletin and forecasting issued on 25 August 2025 can be found in **Table 2**. Results of the weekly river monitoring and forecasting bulletin are also available at <http://ffw.mrcmekong.org/bulletin.php>















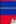
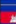






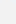


**Table 3. River Monitoring and Forecasting Bulletin.**



## Forecasting from 26 to 30 August 2025

**Highlights:** *Thunderstorms and heavy to very heavy rainfall are likely to occur in several parts of LMB. Water levels at all stations along the Mekong mainstream are expected to rise. However, they are not expected to reach alarm or flood levels.*

Forecasting Station	24 h Observed Rainfall (mm)	Zero gauge above M.S.L (m)	Observed Water Level against zero gauge (m)		Forecasted Water Level (m)					Alarm Level (m)	Flood Level (m)	Low- lying flood level (m)*	Forecasted Water Levels Change In 5 days (m)	Max. Water levels change within next 5 days (m)	Min. distance to alarm level within next 5 days (m)	Min. distance to flood level within next 5 days (m)
	24-Aug		24-Aug	25-Aug	26-Aug	27-Aug	28-Aug	29-Aug	30-Aug							
 Jinghong	0.0	-	537.19	→ 537.21	-	-	-	-	-	-	-	-	-	-	-	-
 Chiang Saen	0.0	357.110	5.47	↑ 5.62	↑ 5.80	↑ 5.95	→ 6.00	→ 5.90	↓ 5.73	11.50	12.80	-	↑ 0.11	0.38	5.50	6.80
 Luang Prabang	17.6	267.195	13.22	↑ 13.68	↑ 14.09	↑ 14.28	→ 14.23	↓ 14.05	↓ 13.92	17.50	18.00	-	↑ 0.24	0.60	3.23	3.73
 Chiang Khan	1.3	194.118	10.33	↑ 10.75	↑ 11.06	↑ 11.62	↑ 12.03	↑ 12.18	→ 12.13	14.50	16.00	-	↑ 1.38	1.43	2.33	3.83
 Vientiane	0.0	158.040	8.32	↑ 8.44	↑ 8.75	↑ 9.18	↑ 9.64	↑ 9.88	→ 9.93	11.50	12.50	-	↑ 1.49	1.49	1.57	2.57
 Nongkhai	0.0	153.648	7.93	→ 7.96	↑ 8.25	↑ 8.77	↑ 9.24	↑ 9.55	↑ 9.68	11.40	12.20	7.35	↑ 1.72	1.72	1.72	2.52
 Paksane	0.0	142.125	9.47	↓ 9.28	↑ 9.73	↑ 10.06	↑ 10.57	↑ 10.98	↑ 11.25	13.50	14.50	-	↑ 1.97	1.97	2.25	3.25
 Nakhon Phanom	5.5	130.961	8.07	→ 8.08	↑ 8.23	↑ 8.65	↑ 9.09	↑ 9.51	↑ 9.74	11.50	12.00	9.04	↑ 1.66	1.66	1.76	2.26
 Thakhek	11.4	129.629	9.25	→ 9.25	↑ 9.47	↑ 9.78	↑ 10.21	↑ 10.70	↑ 10.92	13.00	14.00	-	↑ 1.67	1.67	2.08	3.08
 Mukdahan	0.0	124.219	7.69	→ 7.77	↑ 7.96	↑ 8.50	↑ 9.00	↑ 9.47	↑ 9.61	12.00	12.50	-	↑ 1.84	1.84	2.39	2.89
 Savannakhet	0.0	124.219	6.14	→ 6.22	↑ 6.40	↑ 6.91	↑ 7.31	↑ 7.74	↑ 8.04	12.00	13.00	-	↑ 1.82	1.82	3.96	4.96
 Khong Chiarn	52.0	89.030	8.70	↑ 8.83	→ 8.92	↑ 9.42	↑ 9.95	↑ 10.41	↑ 10.75	13.50	14.50	-	↑ 1.92	1.92	2.75	3.75
 Pakse	16.6	86.490	6.92	↑ 7.04	↑ 7.19	↑ 7.51	↑ 8.04	↑ 8.47	↑ 8.98	11.00	12.00	-	↑ 1.94	1.94	2.02	3.02
 Stung Treng	7.5	36.790	6.66	↓ 6.59	↑ 6.66	↑ 6.77	↑ 6.97	↑ 7.33	↑ 7.64	10.70	12.00	-	↑ 1.05	1.05	3.06	4.36
 Kratie	0.0	-1.080	15.80	↓ 15.56	↓ 15.47	↑ 15.52	↑ 15.66	↑ 15.95	↑ 16.46	22.00	23.00	-	↑ 0.90	0.90	5.54	6.54
 Kompong Cham	0.0	-0.930	9.90	↓ 9.76	↓ 9.61	→ 9.59	↑ 9.64	↑ 9.77	↑ 10.08	15.20	16.20	-	↑ 0.32	0.32	5.12	6.12
 Phnom Penh (Bassac)	0.0	-1.020	6.75	↓ 6.70	↓ 6.65	→ 6.64	→ 6.65	↑ 6.69	↑ 6.78	10.50	12.00	-	↑ 0.08	0.08	3.72	5.22
 Phnom Penh Port	nr	0.070	5.40	↓ 5.36	↓ 5.31	→ 5.30	→ 5.31	↑ 5.35	↑ 5.44	9.50	11.00	-	↑ 0.08	0.08	4.06	5.56
 Koh Khel	3.2	-1.000	5.90	↓ 5.89	→ 5.86	↓ 5.83	→ 5.84	↑ 5.88	↑ 5.92	7.90	8.40	-	↑ 0.03	0.03	1.98	2.48
 Neak Luong	1.6	-0.330	4.64	→ 4.64	→ 4.61	↓ 4.58	→ 4.56	↑ 4.60	↑ 4.67	7.50	8.00	-	↑ 0.03	0.03	2.83	3.33
 Prek Kdam	8.2	0.080	5.86	↓ 5.85	→ 5.82	→ 5.80	→ 5.81	↑ 5.85	↑ 5.93	9.50	10.00	-	↑ 0.08	-0.05	3.57	4.07
 Tan Chau	0.0	0.000	2.13	↓ 2.08	↓ 2.04	↑ 2.08	↑ 2.16	↑ 2.29	↑ 2.43	3.50	4.50	-	↑ 0.35	-0.04	1.07	2.07
 Chau Doc	nr	0.000	1.92	↓ 1.76	→ 1.74	↑ 1.78	↑ 1.86	↑ 1.99	↑ 2.13	3.00	4.00	-	↑ 0.37	-0.02	0.87	1.87

\*: Low-lying flood levels have been requested by Thailand to be included for specific stations including Nongkhai (7.35 m), Nakhon Phanom (9.04 m) and Beung Kan (7.58 m) stations

### WATER LEVEL FORECASTING DEFINITIONS

↑	Rising water level.
→	Stable water level: stable water level is defined as a daily change of less than 10cm from Chaing Saen to Savannakhet; less than 5cm at Pakse and Stung Treng; and no more than 3cm from Kratie downstream.
↓	Falling water level.
X	No data available.
Alarm stage	Alarm stage is when the water level ranges between alarm and flood levels.
Flood stage	Flood stage is when the flood level exceeds. A flood level is determined by member countries.

### NOTES

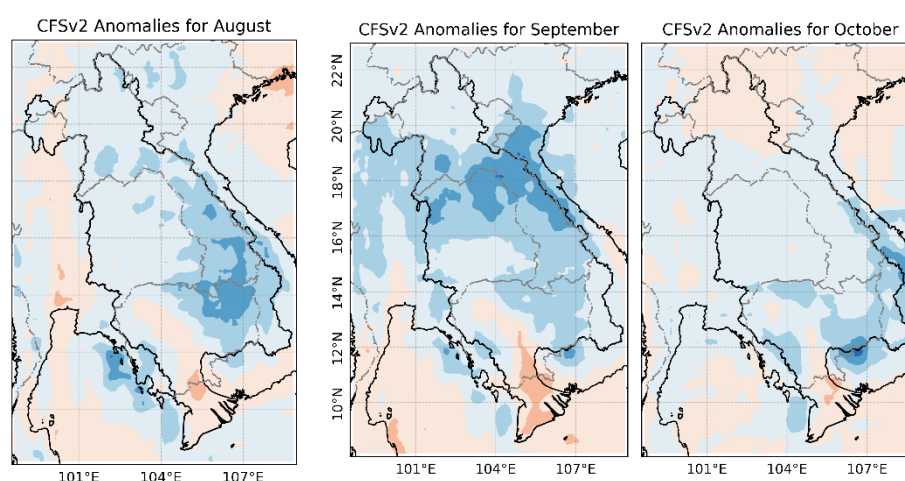
- On 25 August, water levels at all stations along the Mekong mainstream are in normal conditions. As of now, the total accumulated reverse flow volume into the TSL is 22.19 km<sup>3</sup>.
- In the next 5 days, during 25 – 26 August, thunderstorms and heavy to very heavy rainfall are expected in some areas in the LMB including the northern and central part of Lao PDR, the northern and the northeastern part of Thailand.
- For 26 – 30 August, water levels at all stations along the mainstream are expected to rise. However, they are not expected to reach alarm or flood levels.

### 6.3 Flash Flood Information

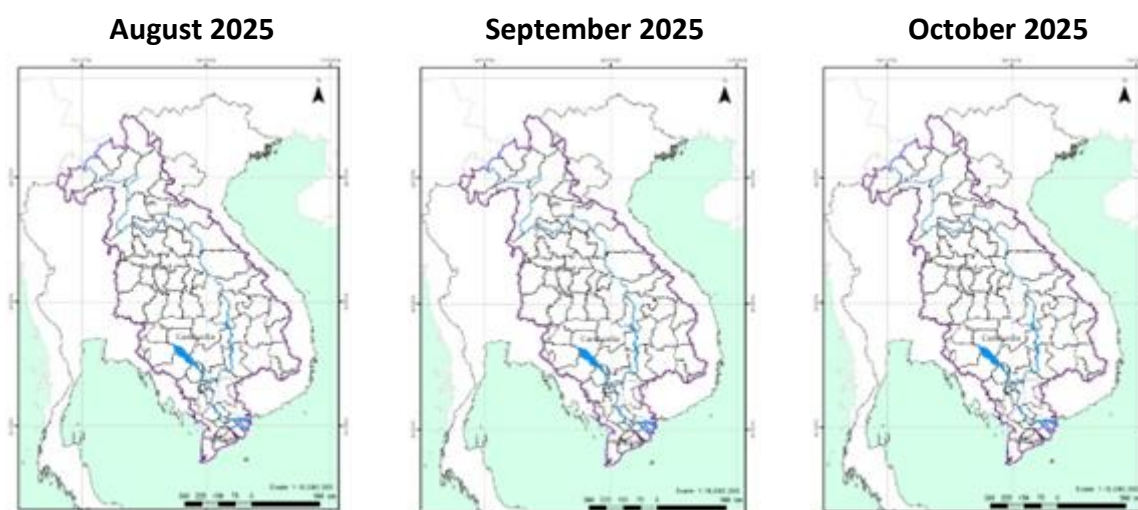
Due to the storm impact, flash flood occurred in some areas in the central part of Lao PDR (in Bolikhamxay and Khammouane province) in the morning on 26 August. With moderate heavy rainfall for next week, flash floods might be detected in some areas in the LMB. And local heavy rain in a short period of time is possible with unpredictable short flash floods. Further detailed information on Flash Flood Guidance Information, as well as on its explanation, is available for download [here](#).

### 6.4 Drought forecast

From August to October 2025 (**Figure 13**), the total amount of rainfall in most areas of the LMB will be higher than the LTA by around 5 - 25 mm, except for some areas in the lowland areas of Cambodia, and the Mekong Delta. Overall, in the next 3 months, rainfall will be mainly concentrated in the central part of the LMB and higher than the LTA from 10 - 25mm.



**Figure 13** Seasonal forecast of rainfall anomalies for August to October 2025 based on CFSv2 (NCEP-NOAA)



**Figure 14.** Monthly forecasts of combined drought indicators for August, September and October 2025



**Figure 14** indicates that the monthly drought forecast for the upcoming three months (August, September, and October 2025) use the Combined Drought Indicator (CDI). The forecast shows that no drought conditions are expected in over the LMB from August to October 2025.

## **7 Summary and Possible Implications**

### **7.1. Rainfall and its forecast**

In the period of 19 - 25 August 2025, thunderstorms and heavy to very heavy rain are experience in the upper and central part of Lao PDR, the northeastern part of Thailand, the 3S Basin.

Next week, from 26 - 27 August, thunderstorm and heavy rain are be likely to occur in some areas in the northern part of Lao PDR and the northern part of Thailand; from 29 - 31 August, thunderstorm and heavy rain are likely to occur in some areas in the northeastern part of Thailand, the central part of Lao PDR, the northern part of Cambodia, and the 3S basin.

### **7.2. Water level and its forecast**

At 22 key monitoring stations along the Mekong mainstream from 19 – 25 August 2025, water levels at all stations along the Mekong mainstream have been in normal conditions, which have not reached alarm or flood levels, and the flow threshold (PMFM 6C) are under normal conditions. It is also the same condition for Tan Chau and Chau Doc monitoring stations, which are significantly influenced by sea tidal fluctuation.

In the period of 26 – 30 August 2025, the water level all stations are not expected to reach alarm and flood levels. The water levels at all stations along the Mekong mainstream are expected to rise. However, they are not expected to reach alarm and flood levels. At Tan Chau and Chau Doc stations, the water levels are predicted to be also fluctuated, resulting from the influence of sea tidal patterns.

### **7.3. Flash flood and its trends**

With the predicted of rainfall for the coming week as mentioned earlier in part 2, the flash flood guidance from low to high level will likely be detected in some areas of the LMB.

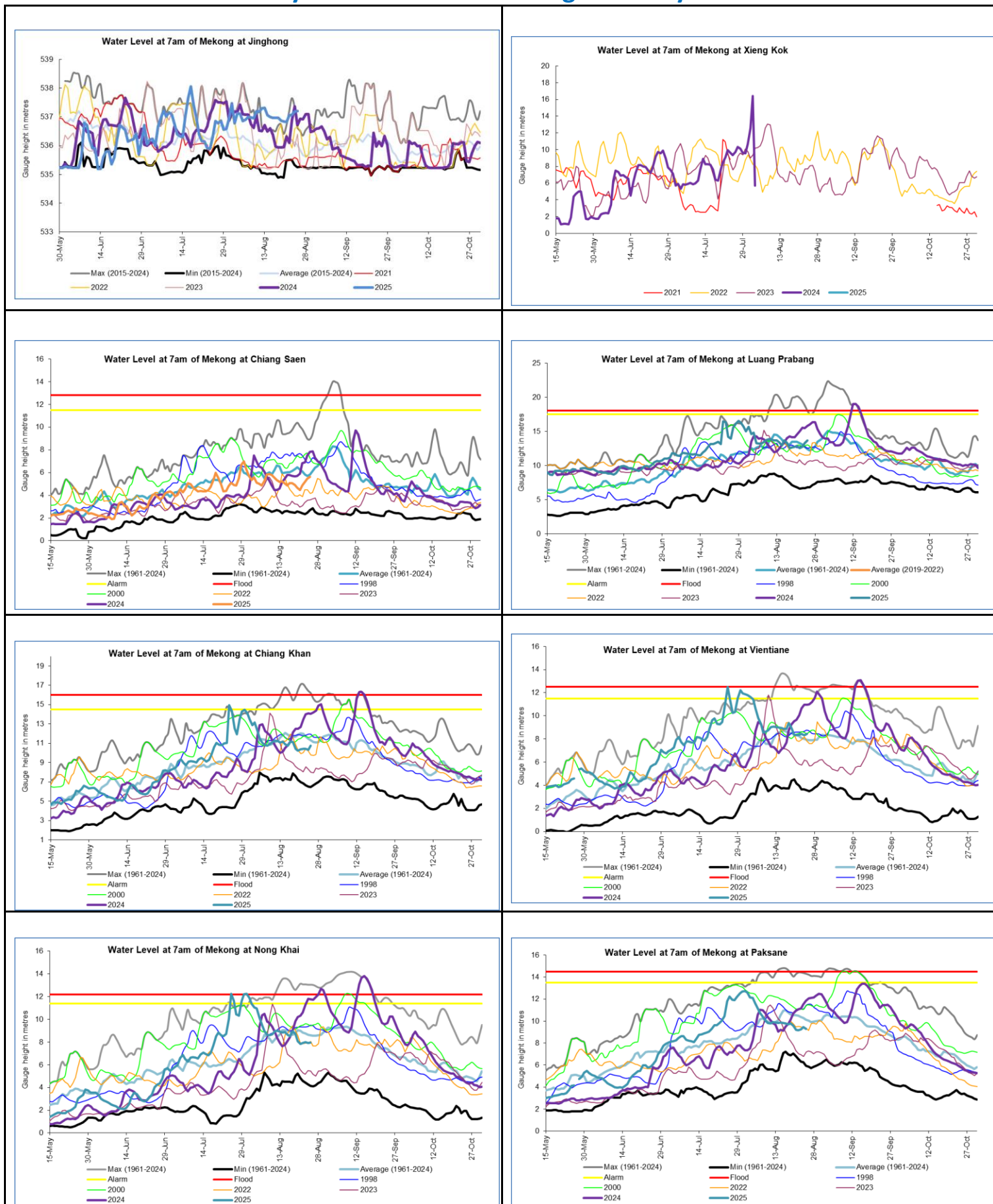
### **7.4. Drought condition and its forecast**

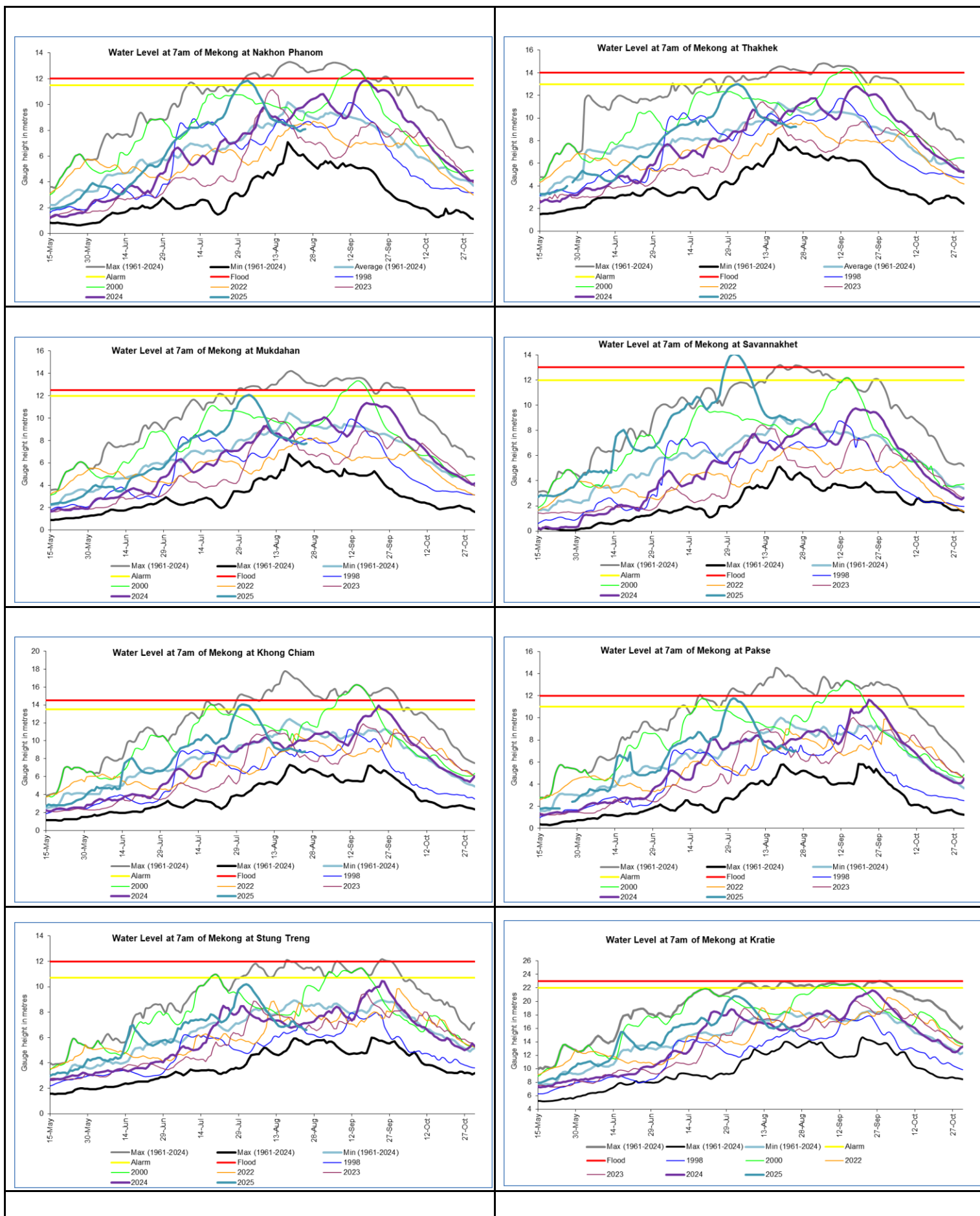
During 19 - 25 August, the LMB were facing normal to wet conditions.

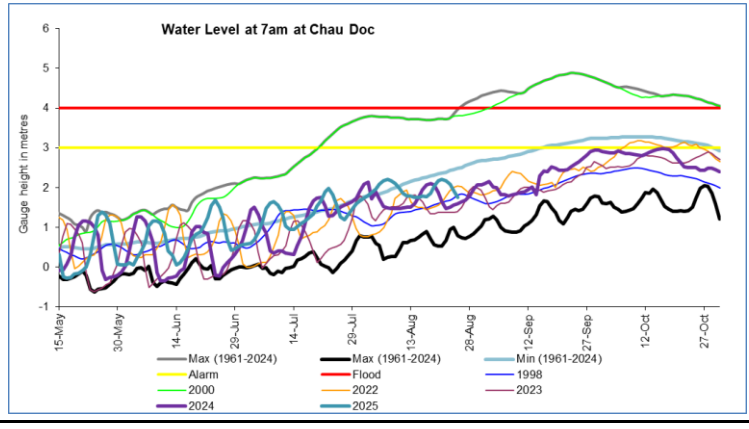
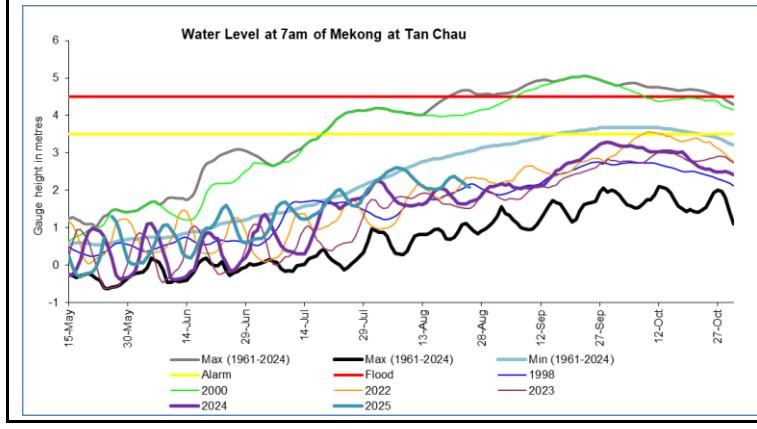
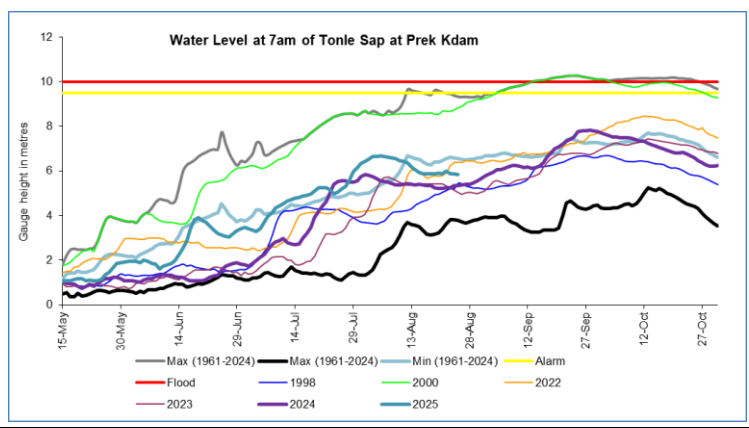
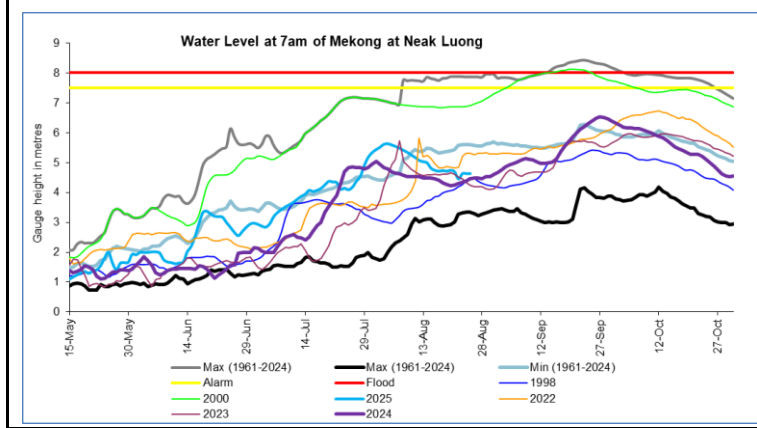
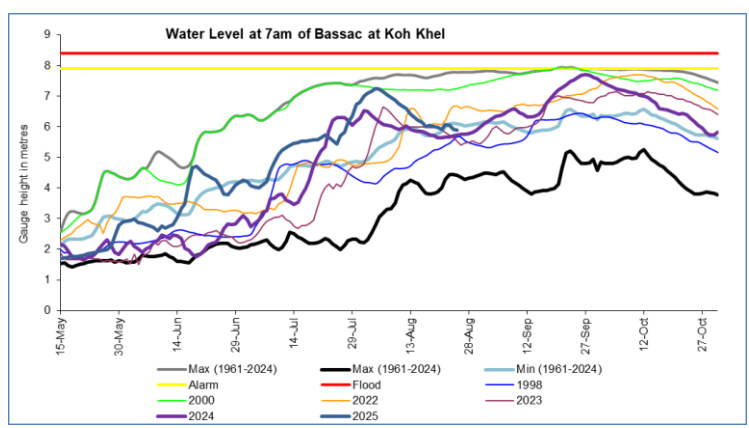
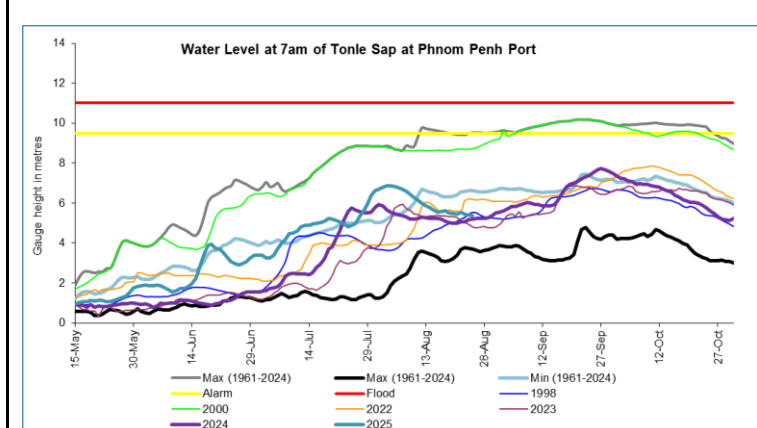
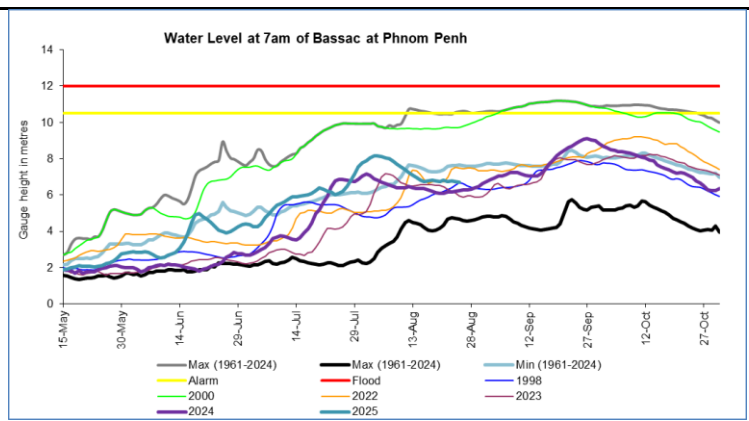
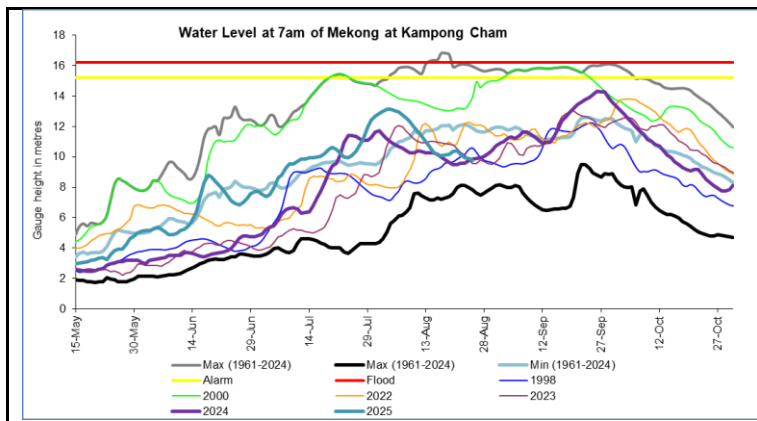
The next three-month from August - October 2025, the total amount of rainfall in most areas of the LMB will be higher than the LTA by around 5 - 25 mm, except for some areas in the lowland areas of Cambodia, and the Mekong Delta. Overall, in the next 3 months, rainfall will be mainly concentrated in the central part of the LMB and higher than the LTA from 10 - 25mm.

The forecast indicates that no drought conditions are expected in over the LMB from August - October 2025 using the Combined Drought Indicator (CDI)

## Annex A: Weekly water level monitoring at 22 key stations









## Annex B: Tables for weekly updated water levels and rainfall at the Key Stations

Table A1: Weekly observed water levels

2025	Jinghong	Chiang Saen	Luang Prabang	Chiang Khan	Vientiane	Nongkhai	Paksane	Nakhon Phanom	Thakhek	Mukdahan	Savannakhet	Khong Chiam	Pakse	Stung Treng	Kratie	Kompong Cham	Phnom Penh (Bassac)	Phnom Penh Port	Koh Khel	Neak Luong	Prek Kdam	Tan Chau	Chau Doc
19-08-2025	536.87	4.91	12.64	10.4	8.95	8.72	9.8	8.33	9.52	7.96	6.4	9.18	7.48	7.26	16.31	10.16	6.79	5.5	6	4.72	5.86	2.23	2.04
20-08-2025	536.84	4.66	12.72	10.22	8.38	8.09	9.6	8.33	9.5	7.96	6.4	9.07	7.34	7.27	16.69	10.36	6.75	5.46	5.98	4.75	5.89	2.34	2.17
21-08-2025	536.83	4.46	12.86	10.36	8.32	7.85	9.22	8.18	9.35	7.93	6.38	8.99	7.16	6.99	16.54	10.4	6.8	5.44	5.9	4.7	5.88	2.38	2.21
22-08-2025	537.04	4.88	12.54	10.4	8.38	7.92	9.17	7.97	9.22	7.78	6.23	8.87	7.08	6.84	16.13	10.18	6.76	5.53	6.08	4.46	5.98	2.31	2.18
23-08-2025	537.08	5.18	12.72	10.4	8.44	8	9.26	7.92	9.17	7.71	6.16	8.8	7.04	6.8	15.91	9.96	6.78	5.43	6.05	4.64	5.86	2.23	2.08
24-08-2025	537.19	5.47	13.22	10.33	8.32	7.93	9.47	8.07	9.25	7.69	6.14	8.7	6.92	6.66	15.8	9.9	6.75	5.4	5.9	4.64	5.86	2.13	1.92
25-08-2025	537.21	5.62	13.68	10.75	8.44	7.96	9.28	8.08	9.25	7.77	6.22	8.83	7.04	6.59	15.56	9.76	6.7	5.36	5.89	4.64	5.85	2.08	1.76
Flood level		12.80	18.00	16.00	12.50	12.00	14.50	12.50	14.00	12.50	13.00	14.50	12.00	12.00	23.00	16.20	12.00	11.00	6.04	8.00	10.00	4.50	4.00

Table A2: Weekly observed rainfall

2025	Jinghong	Chiang Saen	Luang Prabang	Chiang Khan	Vientiane	Nongkhai	Paksane	Nakhon Phanom	Thakhek	Mukdahan	Savannakhet	Khong Chiam	Pakse	Stung Treng	Kratie	Kompong Cham	Phnom Penh (Bassac)	Phnom Penh Port	Koh Khel	Neak Luong	Prek Kdam	Tan Chau	Chau Doc
19-08-2025	0	0	0	0	1.8	3	1	3.2	3.6	1.4	4	23.7	29	0	0	0	0.3	0	0	0	0	0	2.6
20-08-2025	1.5	0	0	26	0.2	0	20.2	0	0	0	0	0	0	0	9.6	0	0	0	0	0	0	0	0
21-08-2025	9.5	29.2	0	0	4	0	11.4	0	0	0.5	0	1.7	0	0	0	0	0	0	0	2.1	0	2.4	2
22-08-2025	12	43.7	10.4	12.3	5.4	38.2	6.8	52.2	40.4	35.7	42	13.7	20	36.5	38.8	8.5	40.5	0	21.4	146	72.3	46.6	134
23-08-2025	7.5	37.8	27.2	9.5	5.4	0	1.6	9	10.2	24.9	20.4	5	0	9.5	0	1	0.9	0	0	0	7.3	0	0
24-08-2025	2.5	2.7	7.6	4	2.2	0	1	0	0	0.5	0	0	19	6	13	1.5	0	0	0	0	0	4.3	0
25-08-2025	0	0	17.6	1.3	0	0	0	5.5	11.4	0	0	52	16.6	7.5	0	0	0	0	3.2	1.6	8.2	0	0
Sum	33.0	80.8	20.6	20.0	19.0	41.2	42.0	69.9	65.6	63.0	66.4	96.1	84.6	59.5	61.4	11.0	41.7	0.0	24.6	150.1	87.8	53.3	138.6

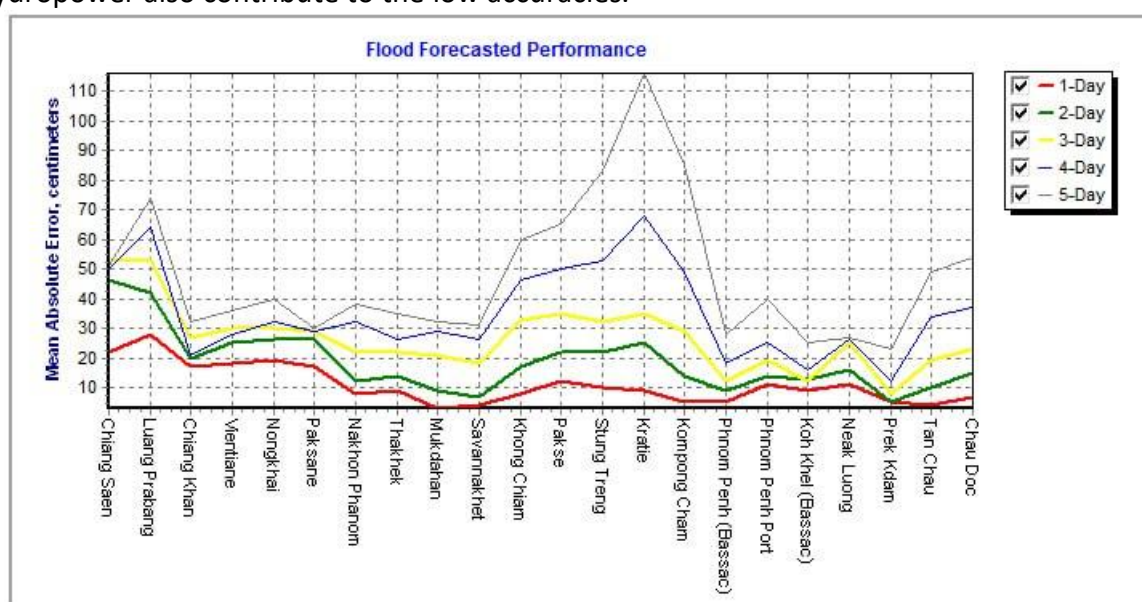


## Annex C: Performance of the weekly flood forecasting

“Accuracy” here refers to the state where data recorded in the MRC’s Mekong River Flood Forecasting System are cleaned and verified.

The adjustment of flood forecasting outcomes from the flood forecasting system requires flood forecasters to have extensive knowledge in hydrology and statistical modelling for estimating the relationships between stations upstream and downstream in the Mekong River Basin. Flood forecasting performance presented in the graph below shows the average flood forecasting accuracy at each key station along the Mekong mainstream from 19 to 25 August 2025.

The forecasting values from 19 to 25 August 2025 show that the overall accuracy is fair for a four-day to five-day forecast in lead time (less than 250 cm) for all of the stations from the upper to the lower parts of the Mekong River with combine information of rainfall and reservoirs' operation in this area during the report period. Moreover, the sudden release from hydropower also contribute to the low accuracies.



**Note:** The higher percentage of flood forecasting accuracy is due to several key factors as follows:

- Chiang Saen station is influenced by hydropower upstream operation from China.
- Luang Prabang to Chiang Khan and Paksane to Stung Treng to Kratie have been influenced by hydropower operations upstream, tributaries inflows.
- The influence of heavy rainfall caused by storms and hydropower operations from upstream, tributaries inflows and the lower part of the Mekong floodplain, including the 3S (Stung Treng and Kratie).
- Fluctuations of the water levels at Tan Chau and Chau Doc stations were due to daily tidal effects of the sea in the Mekong Delta.
- Satellite rainfall data were not representative of the actual rainfall at ground stations in some areas of the Mekong region.



## Mekong River Commission Secretariat

P. O. Box 6101, 184 Fa Ngoum Road, Unit 18 Ban Sithane Neua, Sikhottabong District, Vientiane 01000, Lao PDR  
Tel: +856 21 263 263. Fax: +856 21 263 264 [www.mrcmekong.org](http://www.mrcmekong.org)  
© Mekong River Commission 2024